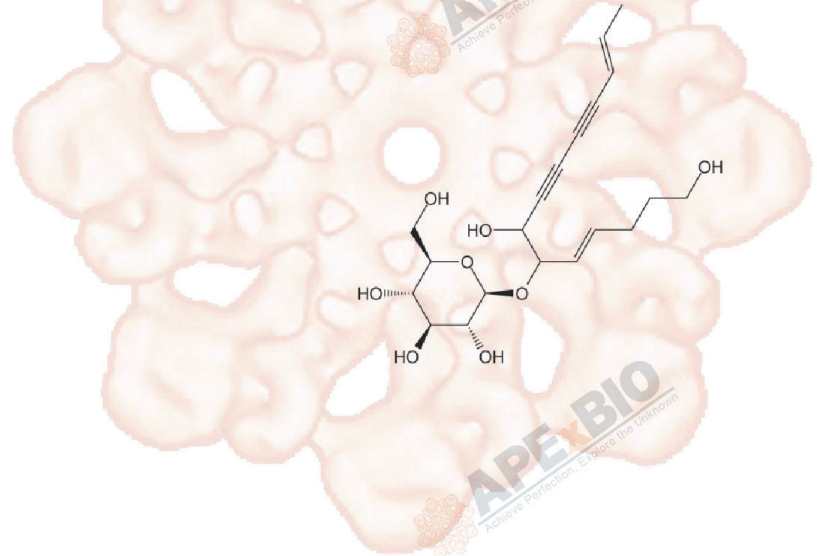


Product Data Sheet

Lobetyolin

Cat. No.:	N2816
CAS No.:	136085-37-5
Formula:	C ₂₀ H ₂₈ O ₈
M.Wt:	396.43
Synonyms:	
Target:	Natural Products
Pathway:	
Storage:	Store at -20°C



Solvent & Solubility

≥ 17.4 mg/mL in EtOH

In Vitro

Preparing Stock Solutions	Solvent	Mass	1mg	5mg	10mg	
			Concentration			
			1 mM	2.5225 mL	12.6126 mL	25.2251 mL
			5 mM	0.5045 mL	2.5225 mL	5.0450 mL
			10 mM	0.2523 mL	1.2613 mL	2.5225 mL

Please refer to the solubility information to select the appropriate solvent.

Biological Activity

Shortsummary

IC₅₀ & Target

In Vitro

Cell Viability Assay

Preparation method:

In Vivo

Animal experiment

Applications:

Product Citations

See more customer validations on www.apexbt.com.

References

Caution

FOR RESEARCH PURPOSES ONLY.

NOT FOR HUMAN, VETERINARY DIAGNOSTIC OR THERAPEUTIC USE.

Specific storage and handling information for each product is indicated on the product datasheet. Most APExBIO products are stable under the recommended conditions. Products are sometimes shipped at a temperature that differs from the recommended storage temperature. Shortterm storage of many products are stable in the short-term at temperatures that differ from that required for long-term storage. We ensure that the product is shipped under conditions that will maintain the quality of the reagents. Upon receipt of the product, follow the storage recommendations on the product data sheet.

APExBIO Technology

www.apexbt.com

7505 Fannin street, Suite 410, Houston, TX 77054.

Tel: +1-832-696-8203 | Fax: +1-832-641-3177 | Email: info@apexbt.com

