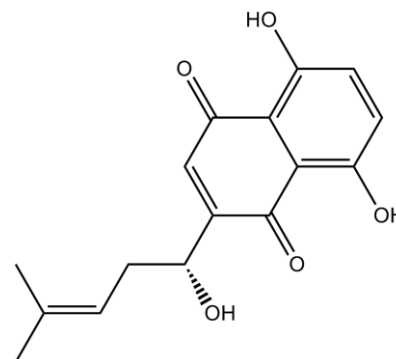


Product Data Sheet

Chemical Properties

| | |
|----------------------|--|
| Product Name: | Shikonin |
| Cas No.: | 517-89-5 |
| M.Wt: | 288.31 |
| Formula: | C ₁₆ H ₁₆ O ₅ |



| | |
|----------------------------|--|
| Chemical Name: | 5,8-dihydroxy-2-[(1R)-1-hydroxy-4-methylpent-3-enyl]naphthalene-1,4-dione |
| Canonical SMILES: | <chem>CC(=CCC(C1=CC(=O)C2=C(C=CC(=C2C1=O)O)O)O)C</chem> |
| Solubility: | ≥8.09mg/mL in DMSO |
| Storage: | Store at -20°C |
| General tips: | For obtaining a higher solubility , please warm the tube at 37° C and shake it in the ultrasonic bath for a while. Stock solution can be stored below -20° C for several months. |
| Shopping Condition: | Evaluation sample solution : ship with blue ice All other available size: ship with RT , or blue ice upon request |

Biological Activity

Targets : Nature Products

Pathways:

Description:

Extracted from Lithosperrum erythrorhizon Sieb. et Zucc. roots; Store the product in sealed, cool and dry condition

Reference:

Caution

FOR RESEARCH PURPOSES ONLY.

NOT FOR HUMAN, VETERINARY DIAGNOSTIC OR THERAPEUTIC USE.

Specific storage and handling information for each product is indicated on the product datasheet. Most ApexBio products are stable under the recommended conditions. Products are sometimes shipped at a temperature that differs from the recommended storage temperature. Shortterm storage of many products are stable in the short-term at temperatures that differ from that required for long-term storage. We ensure that the product is shipped under conditions that will maintain the quality of the reagents. Upon receipt of the product, follow the storage recommendations on the product data sheet.

ApexBio Technology

www.apexbt.com

7505 Fannin street, Suite 410, Houston, TX 77054.

Tel: +1-832-696-8203 | Fax: +1-832-641-3177 | Email: info@apexbt.com