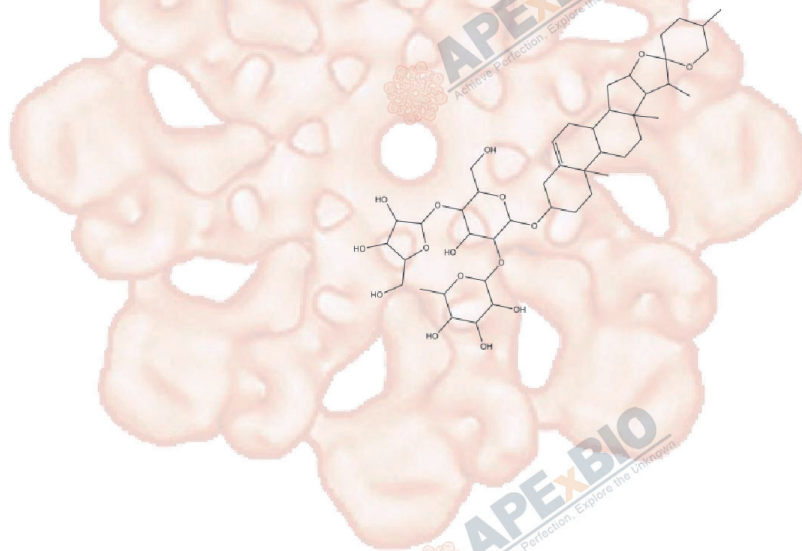


# Product Data Sheet

## Polyphyllin A

Cat. No.:	N1924
CAS No.:	50773-41-6
Formula:	C44H70O16
M.Wt:	855.02
Synonyms:	Chonglou saponin I
Target:	Natural Products
Pathway:	
Storage:	Store at -20°C



## Solvent & Solubility

≥42.75mg/mL in EtOH with ultrasonic and warming

In Vitro

	Solvent Concentration	Mass	1mg	5mg	10mg
Preparing					
Stock Solutions					
	1 mM		1.1696 mL	5.8478 mL	11.6956 mL
	5 mM		0.2339 mL	1.1696 mL	2.3391 mL
	10 mM		0.1170 mL	0.5848 mL	1.1696 mL

Please refer to the solubility information to select the appropriate solvent.

## Biological Activity

Shortsummary

IC<sub>50</sub> & Target

In Vitro

In Vivo

### Cell Viability Assay

Preparation method:

### Animal experiment

Applications:

## Product Citations

See more customer validations on [www.apexbt.com](http://www.apexbt.com).

## References

## Caution

**FOR RESEARCH PURPOSES ONLY.**

**NOT FOR HUMAN, VETERINARY DIAGNOSTIC OR THERAPEUTIC USE.**

*Specific storage and handling information for each product is indicated on the product datasheet. Most APEX BIO products are stable under the recommended conditions. Products are sometimes shipped at a temperature that differs from the recommended storage temperature. Short-term storage of many products are stable in the short-term at temperatures that differ from that required for long-term storage. We ensure that the product is shipped under conditions that will maintain the quality of the reagents. Upon receipt of the product, follow the storage recommendations on the product data sheet.*

**APEX BIO Technology**

**[www.apexbt.com](http://www.apexbt.com)**

7505 Fannin street, Suite 410, Houston, TX 77054.

Tel: +1-832-696-8203 | Fax: +1-832-641-3177 | Email: [info@apexbt.com](mailto:info@apexbt.com)