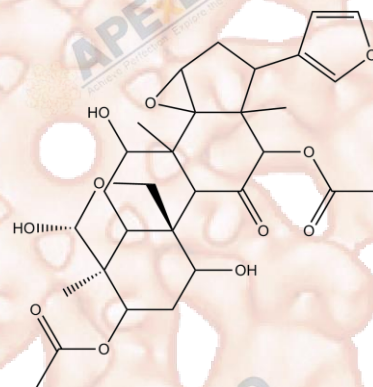


## Product Data Sheet

### Toosendanin

<b>Cat. No.:</b>	N1864
<b>CAS No.:</b>	58812-37-6
<b>Formula:</b>	C <sub>30</sub> H <sub>38</sub> O <sub>11</sub>
<b>M.Wt:</b>	574.62
<b>Synonyms:</b>	Chuanliansu; Azedarachin
<b>Target:</b>	Natural Products
<b>Pathway:</b>	
<b>Storage:</b>	Store at -20°C



### Solvent & Solubility

≥28.75 mg/mL in EtOH; insoluble in H<sub>2</sub>O; ≥22.55 mg/mL in DMSO

In Vitro

	Solvent	Mass Concentration	1mg	5mg	10mg
Preparing Stock Solutions		1 mM	1.7403 mL	8.7014 mL	17.4028 mL
		5 mM	0.3481 mL	1.7403 mL	3.4806 mL
		10 mM	0.1740 mL	0.8701 mL	1.7403 mL

Please refer to the solubility information to select the appropriate solvent.

### Biological Activity

Shortsummary

IC<sub>50</sub> & Target

In Vitro

#### Cell Viability Assay

Preparation method:

In Vivo

#### Animal experiment

Applications:

### Product Citations

See more customer validations on [www.apexbt.com](http://www.apexbt.com).

## References

## Caution

**FOR RESEARCH PURPOSES ONLY.**

**NOT FOR HUMAN, VETERINARY DIAGNOSTIC OR THERAPEUTIC USE.**

Specific storage and handling information for each product is indicated on the product datasheet. Most APExBIO products are stable under the recommended conditions. Products are sometimes shipped at a temperature that differs from the recommended storage temperature. Shortterm storage of many products are stable in the short-term at temperatures that differ from that required for long-term storage. We ensure that the product is shipped under conditions that will maintain the quality of the reagents. Upon receipt of the product, follow the storage recommendations on the product data sheet.

**APExBIO Technology**

**[www.apexbt.com](http://www.apexbt.com)**

7505 Fannin street, Suite 410, Houston, TX 77054.

Tel: +1-832-696-8203 | Fax: +1-832-641-3177 | Email: [info@apexbt.com](mailto:info@apexbt.com)

