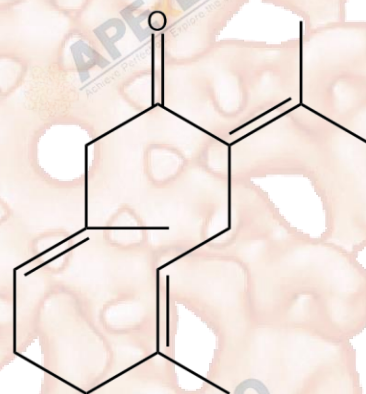


Product Data Sheet

Germacrone

Cat. No.:	N1500
CAS No.:	6902-91-6
Formula:	C ₁₅ H ₂₂ O
M.Wt:	218.17
Synonyms:	(E,E)-Germacrone
Target:	Natural Products
Pathway:	
Storage:	Store at -20°C



Solvent & Solubility

≥21.8 mg/mL in DMSO; insoluble in H₂O; ≥8.44 mg/mL in EtOH

In Vitro

	Solvent	Mass Concentration	1mg	5mg	10mg
Preparing Stock Solutions		1 mM	4.5836 mL	22.9179 mL	45.8358 mL
		5 mM	0.9167 mL	4.5836 mL	9.1672 mL
		10 mM	0.4584 mL	2.2918 mL	4.5836 mL

Please refer to the solubility information to select the appropriate solvent.

Biological Activity

Shortsummary

IC₅₀ & Target

In Vitro

In Vivo

Cell Viability Assay

Preparation method:

Animal experiment

Applications:

Product Citations

See more customer validations on www.apexbt.com.

References

Caution

FOR RESEARCH PURPOSES ONLY.

NOT FOR HUMAN, VETERINARY DIAGNOSTIC OR THERAPEUTIC USE.

Specific storage and handling information for each product is indicated on the product datasheet. Most APEx BIO products are stable under the recommended conditions. Products are sometimes shipped at a temperature that differs from the recommended storage temperature. Shortterm storage of many products are stable in the short-term at temperatures that differ from that required for long-term storage. We ensure that the product is shipped under conditions that will maintain the quality of the reagents. Upon receipt of the product, follow the storage recommendations on the product data sheet.

APEx BIO Technology

www.apexbt.com

7505 Fannin street, Suite 410, Houston, TX 77054.

Tel: +1-832-696-8203 | Fax: +1-832-641-3177 | Email: info@apexbt.com

