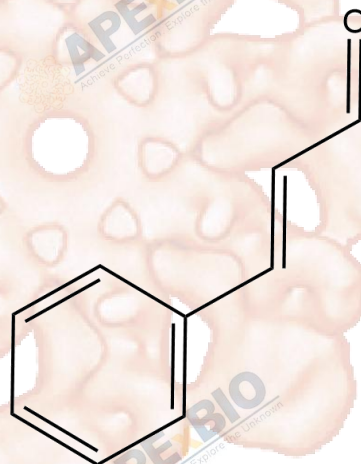


# Product Data Sheet

## trans-Cinnamaldehyde

**Cat. No.:** N1482  
**CAS No.:** 14371-10-9  
**Formula:** C<sub>9</sub>H<sub>8</sub>O  
**M.Wt:** 132.16  
**Synonyms:** Cinnamic aldehyde,  $\beta$ -phenylacrolein  
**Target:** Natural Products  
**Pathway:**  
**Storage:** Store at -20° C



### Solvent & Solubility

insoluble in H<sub>2</sub>O;  $\geq 13.2$  mg/mL in DMSO;  $\geq 24.9$  mg/mL in EtOH

In Vitro

Preparing Stock Solutions	Mass		1mg	5mg	10mg
	Solvent	Concentration			
	1 mM	7.5666 mL	37.8329 mL	75.6659 mL	
	5 mM	1.5133 mL	7.5666 mL	15.1332 mL	
	10 mM	0.7567 mL	3.7833 mL	7.5666 mL	

Please refer to the solubility information to select the appropriate solvent.

### Biological Activity

Shortsummary

IC<sub>50</sub> & Target

In Vitro

In Vivo

#### Cell Viability Assay

Preparation method:

#### Animal experiment

Applications:

## Product Citations

See more customer validations on [www.apexbt.com](http://www.apexbt.com).

## References

## Caution

**FOR RESEARCH PURPOSES ONLY.**

**NOT FOR HUMAN, VETERINARY DIAGNOSTIC OR THERAPEUTIC USE.**

*Specific storage and handling information for each product is indicated on the product datasheet. Most APEx BIO products are stable under the recommended conditions. Products are sometimes shipped at a temperature that differs from the recommended storage temperature. Shortterm storage of many products are stable in the short-term at temperatures that differ from that required for long-term storage. We ensure that the product is shipped under conditions that will maintain the quality of the reagents. Upon receipt of the product, follow the storage recommendations on the product data sheet.*

**APEx BIO Technology**

**[www.apexbt.com](http://www.apexbt.com)**

7505 Fannin street, Suite 410, Houston, TX 77054.

Tel: +1-832-696-8203 | Fax: +1-832-641-3177 | Email: [info@apexbt.com](mailto:info@apexbt.com)

