

Anti-Caspase 9 Rabbit Monoclonal Antibody

Introduction

Involved in the activation cascade of caspases responsible for apoptosis execution. Binding of caspase-9 to Apaf-1 leads to activation of the protease which then cleaves and activates caspase-3. Promotes DNA damage-induced apoptosis in a ABL1/c-Abl-dependent manner. Proteolytically cleaves poly(ADP-ribose) polymerase (PARP).

Product parameters

Alternative Names	CASP 9; Caspase-9; CASP-9; Apoptotic protease Mch-6; Apoptotic protease-activating factor 3; APAF-3; ICE-like apoptotic protease 6; ICE-LAP6; Caspase-9 subunit p35; Caspase-9 subunit p10; CASP9; MCH6
Gene ID	12371
Gene Name	Casp9
SwissProt ID	Q8C3Q9
Host	Rabbit
Reactivity	Mouse, Rat
Molecular Weight	Calculated MW: 50 kDa; Observed MW: 50 kDa
Conjugation	Unconjugated
Ex	-
Em	-
Modification	Unmodified
Clonality	IgG
Isotype	Monoclonal Antibody
Clonality No.	AP-15G5H9
Form	Liquid
Concentration	See label
Carrier	Carrier Not Free
Immunogen	Recombinant protein of mouse Caspase-9
Purification	Affinity Purified
Buffer System	50mM Tris-Glycine (pH 7.4), 0.15M NaCl, 40% Glycerol, 0.01% Sodium azide and 0.05% BSA.
Application	WB, IP
Dilution Ratio	WB: 1/500-1/1000 IP: 1/20
Research Field	Cell Biology
Product Categories	Primary antibody

Shipping	Blue ice
Storage	-20°C
Expiration Date	12 months
Note	Please avoid freeze-thaw cycles.

Protocol

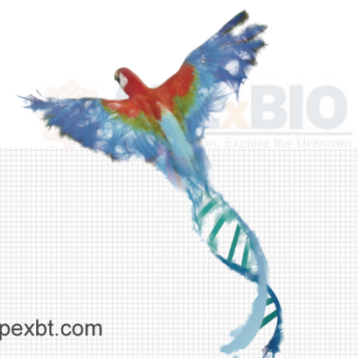


Configure the product according to the application range and recommended dilution ratio.

***Note:** The primary antibody dilution buffer options: WB - Primary Antibody Dilution Buffer (Cat. #: K1200, Not for HRP/AP conjugated antibodies), Immunostaining - Immunol Staining Primary Antibody Dilution Solution (Cat. #: K4655).

Note

1. This product is for scientific research use only.



APExBIO Technology

www.apexbt.com

7505 Fannin street, Suite 410, Houston, TX 77054.

Tel: +1-832-696-8203 | Fax: +1-832-641-3177 | Email: info@apexbt.com