

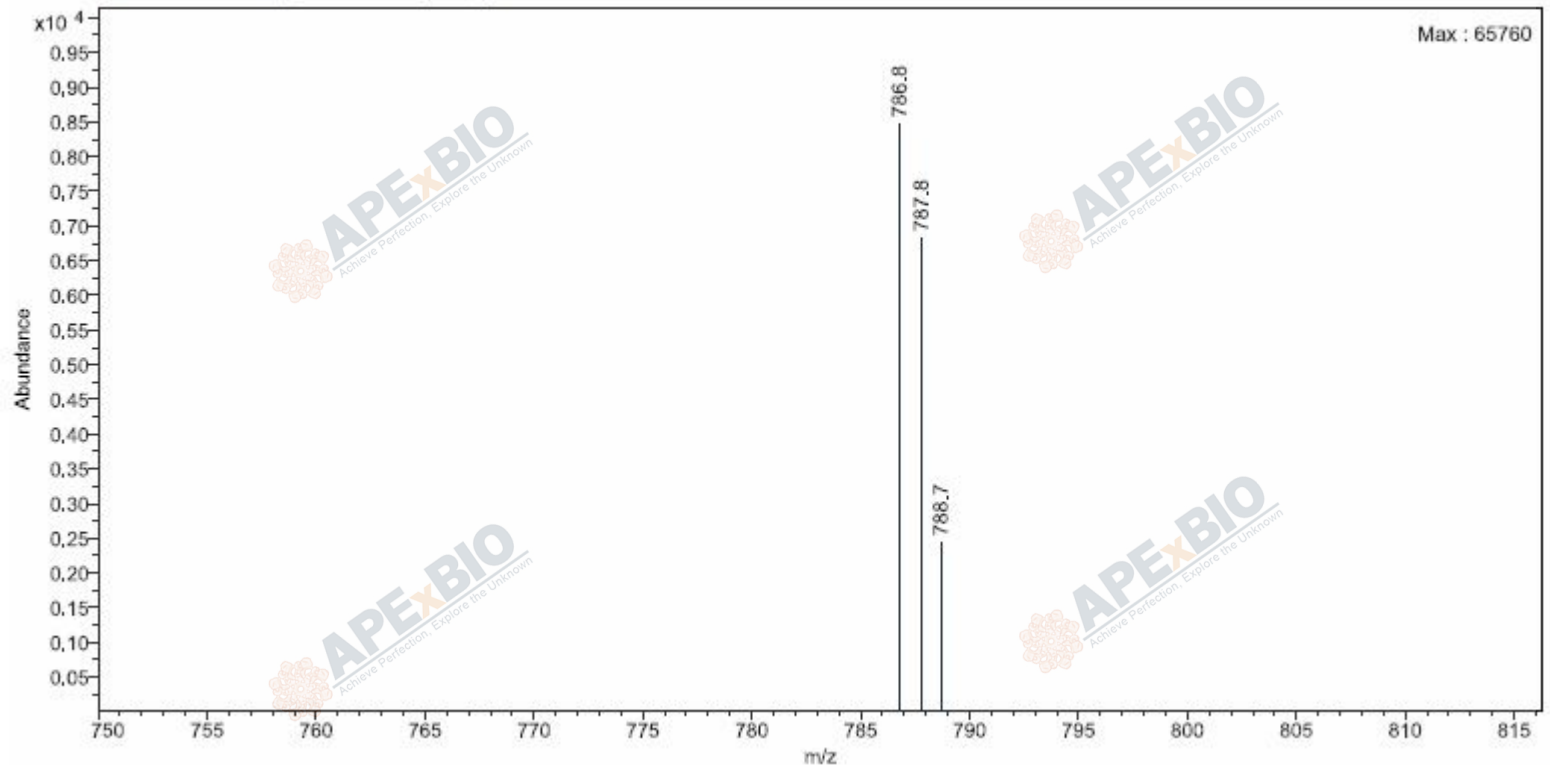
## Mass Spectrometry

### Analysis Information

**Product Name:** 1,2-Dioleoyl-sn-glycero-3-phospho-L-serine sodium  
**Operator:** David  
**Injection Date:** 02/05/2026 16:05:29  
**Inj. Volume:** 10  
**Batch No.:** 26001

### Result

MS1 -Scan ESI (rt: 0,729 min) Frag=135V Gain=1,0



**Molecular Weight:** 810.03

**m/z([M-Na]-) Base Peak:** 786.8

Caution

**FOR RESEARCH PURPOSES ONLY.**

**NOT FOR HUMAN, VETERINARY DIAGNOSTIC OR THERAPEUTIC USE.**

**APEX BIO Technology**

**[www.apexbt.com](http://www.apexbt.com)**

7505 Fannin Street, Suite 410, Houston, TX 77054.

Tel: +1-832-696-8203 | Fax: +1-832-641-3177 | Email: [info@apexbt.com](mailto:info@apexbt.com)