

Cy3 Goat Anti-Rabbit IgG (H+L) Antibody

General Information

Name	Cy3 Goat Anti-Rabbit IgG (H+L) Antibody
Host species	Goat
Target species	Rabbit
Tested applications	Suitable for: ICC/IF, IHC-Fr, IHC-P, ICC, Flow Cyt, ELISA
Conjugation	Cy3. Ex: 552 nm, Em: 565 nm

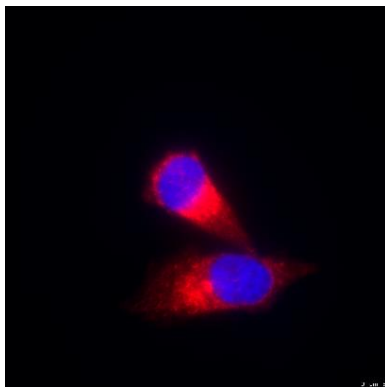
Properties

Form	Liquid
Storage buffer	Preservative: 0.02% Sodium azide Constituents: 23% Glycerol, PBS, 1% BSA
Storage instructions	Shipped at 4°C. Store at 4°C short term (2 weeks). Upon delivery aliquot. Store at -20°C. Avoid freeze / thaw cycle. Stable for 12 months at -20°C. Keep away from Light.
Concentration	1 mg/mL
Purity	Immunogen affinity purified
Purification notes	This antibody was isolated by affinity chromatography using antigen coupled to agarose beads.
Clonality	Polyclonal
Isotype	IgG

Applications

Application	Notes
ICC/IF	1/500-1/2000
IHC-Fr	Use at an assay dependent dilution.
IHC-P	1/100-1/500
Flow Cyt	1/250-1/1000
ELISA	Use at an assay dependent dilution.

Images



Immunofluorescence analysis of HeLa cells, using PHB antibody as the primary antibody. The cells were incubated with the primary antibody overnight at 4°C.

Secondary antibody: Cy3 Goat Anti-Rabbit IgG (H+L) Antibody at dilution of 1:1000.

Blue: DAPI for nuclear staining.

Notes

Our product is suitable for single-labeling experiment, to conduct multi-labeling experiments, secondary antibodies with pre-affinity treatment of serum proteins or immunoglobulin of close species are recommended.



APEx BIO Technology

www.apexbt.com

7505 Fannin street, Suite 410, Houston, TX 77054.

Tel: +1-832-696-8203 | Fax: +1-832-641-3177 | Email: info@apexbt.com

