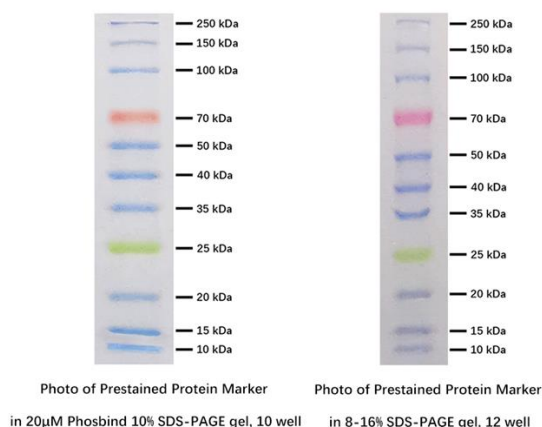


Prestained Protein Marker (Triple color, EDTA free, 10-250 kDa)

Introduction

The Prestained Protein Marker (Triple color, EDTA free, 10-250 kDa) is a prestained mixture of ten recombinant proteins ranging from 10 kDa to 250 kDa. Three different chromophores are bound to the proteins, 9 bands with blue, one red at 70 kDa and one green at 25 kDa. The Prestained Protein Marker is applied for observing protein separation during SDS-PAGE electrophoresis, verification of western transfer efficiency on membranes, and identifying the size of proteins. The marker can also be used in fluorescent imaging of membranes.

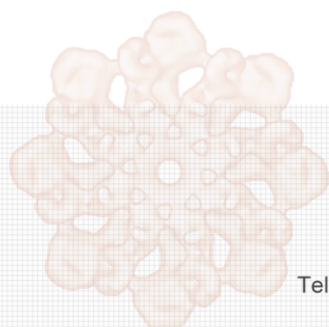
The buffer of the Marker doesn't contain EDTA which means it can be used in Phosbind (Cat. No. F4002) SDS-PAGE. The recommended volume for 1 mm mini-gel is 3-5 μ L. Large size gels need more volume.



Components and Storage

Component	Size
Prestained Protein Marker (Tripple color, EDTA free, 10-250 KDa)	250 μ L
Prestained Protein Marker (Tripple color, EDTA free, 10-250 KDa)	2 \times 250 μ L

Store the Prestained Protein Marker at -20°C. The Marker can be stored at 4°C for several days.



APExBIO Technology
www.apexbt.com

7505 Fannin street, Suite 410, Houston, TX 77054.

Tel: +1-832-696-8203 | Fax: +1-832-641-3177 | Email: info@apexbt.com

