

## Certificate of Analysis

Product Name: Fipexide hydrochloride

Cat. No.: C8783

Batch No.: 26001

### Physical and Chemical Properties

Batch Molecular Formula: C<sub>20</sub>H<sub>22</sub>Cl<sub>2</sub>N<sub>2</sub>O<sub>4</sub>

Batch Molecular Weight: 425.31

Purity: >99%

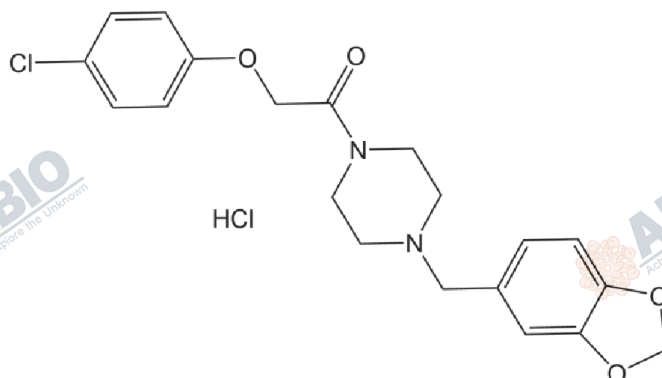
Cas No.: 34161-23-4

### Analytical Data

HPLC: HPLC

Mass Spectrum: Consistent with structure

### Structure



# Caution

**FOR RESEARCH PURPOSES ONLY.**

**NOT FOR HUMAN, VETERINARY DIAGNOSTIC OR THERAPEUTIC USE.**



**APExBIO Technology**



**[www.apexbt.com](http://www.apexbt.com)**

7505 Fannin street, Suite 410, Houston, TX 77054.

Tel: +1-832-696-8203 | Fax: +1-832-641-3177 | Email: [info@apexbt.com](mailto:info@apexbt.com)

