

# High Performance Liquid Chromatography

## Analysis Information

**Product Name:** Veratraldehyde  
**Operator:** David  
**Injection Date:** 7/7/2021 10:15:35 PM  
**Batch No.:** 2

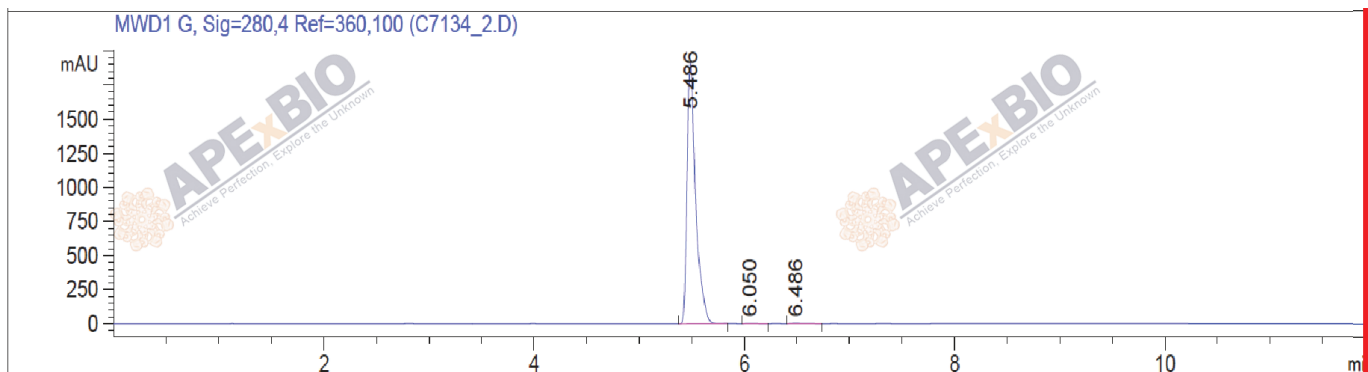
## HPLC Condition

**Column :** ZORBAX Eclipse Pluse C18 3.5 $\mu$ m 4.6mmx100mm  
**Solvent A:** H2O+0.1%TFA  
**Solvent B:** ACN+0.1%TFA  
**Gradient:**

Time	A	B
0.0min	80%	20%
2.0min	80%	20%
7.0min	5%	95%
10.00min	0%	100%
12.00min	0%	100%
15.00min	Stop	Stop

**Flow rate:** 1mL/min  
**Wavelength:** 280nm  
**Volume:** 3 $\mu$ l

## Result



Rank	RetTime(min)	Area(mAU*s)	Area %
1	5.486	1.09464e4	99.7172
2	6.050	6.43120	0.0586
3	6.486	24.61424	0.2242

## Caution

**FOR RESEARCH PURPOSES ONLY.**

**NOT FOR HUMAN, VETERINARY DIAGNOSTIC OR THERAPEUTIC USE.**

**APEX BIO Technology**

**www.apexbt.com**

7505 Fannin street, Suite 410, Houston, TX 77054.

Tel: +1-832-696-8203 | Fax: +1-832-641-3177 | Email: info@apexbt.com