

Certificate of Analysis

Product Name: Amidepsine A

Cat. No.: C4872

Batch No.: 1

Physical and Chemical Properties

Batch Molecular Formula: C₂₉H₂₉NO₁₁

Batch Molecular Weight: 567.5

Purity: ≥95.00%

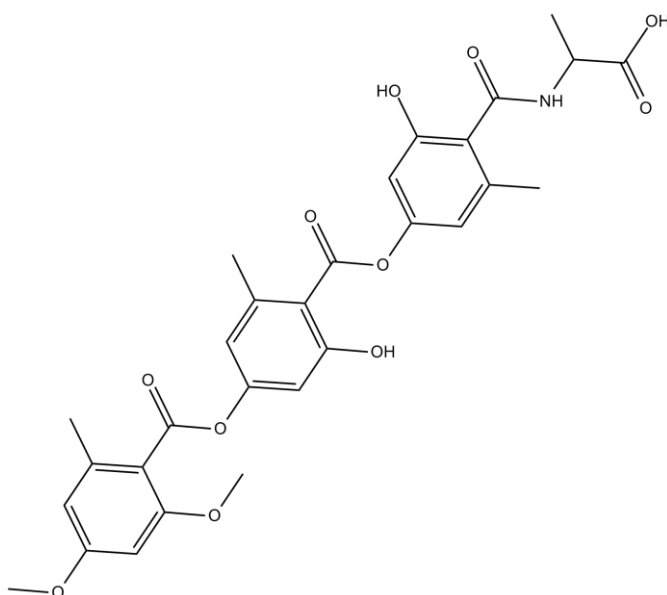
Cas No.: 169181-28-6

Analytical Data

HPLC: Shows Min 95% purity

Mass Spectrum: Consistent with structure

Structure



Caution

FOR RESEARCH PURPOSES ONLY.

NOT FOR HUMAN, VETERINARY DIAGNOSTIC OR THERAPEUTIC USE.

APEX BIO Technology

www.apexbt.com

7505 Fannin Street, Suite 410, Houston, TX 77054.

Tel: +1-832-696-8203 | Fax: +1-832-641-3177 | Email: info@apexbt.com