

## Certificate of Analysis

Product Name: Sitagliptin (phosphate)

Cat. No.: C3966

Batch No.: 1

### Physical and Chemical Properties

Batch Molecular Formula: C<sub>16</sub>H<sub>15</sub>F<sub>6</sub>N<sub>5</sub>O·H<sub>3</sub>PO<sub>4</sub>

Batch Molecular Weight: 505.3

Purity: >98%

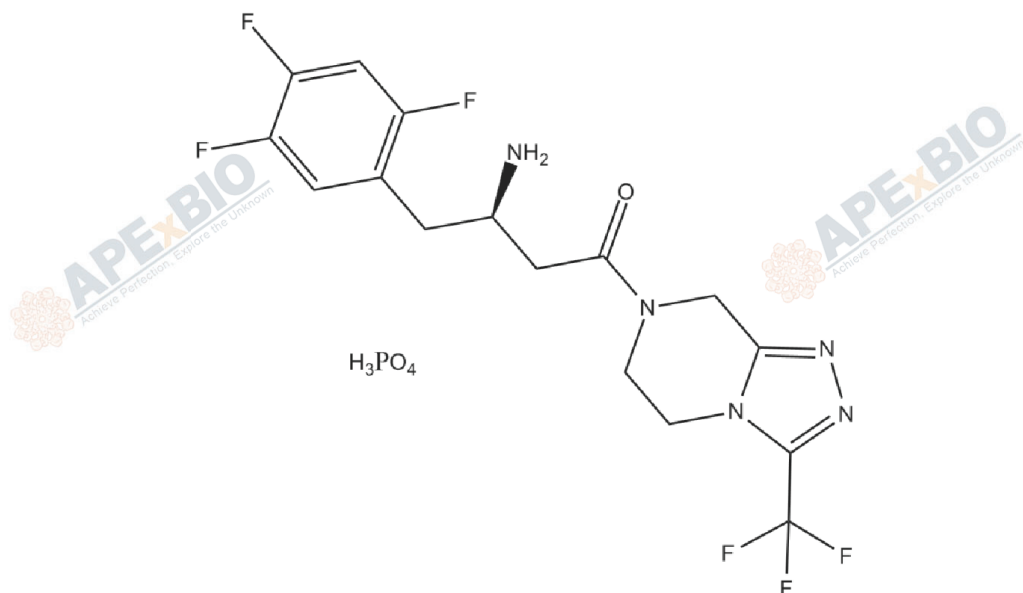
Cas No.: 654671-78-0

### Analytical Data

HPLC: HPLC

Mass Spectrum: Consistent with structure

### Structure



# Caution

**FOR RESEARCH PURPOSES ONLY.**

**NOT FOR HUMAN, VETERINARY DIAGNOSTIC OR THERAPEUTIC USE.**



**APEX BIO Technology**



**[www.apexbt.com](http://www.apexbt.com)**

7505 Fannin street, Suite 410, Houston, TX 77054.

Tel: +1-832-696-8203 | Fax: +1-832-641-3177 | Email: [info@apexbt.com](mailto:info@apexbt.com)

