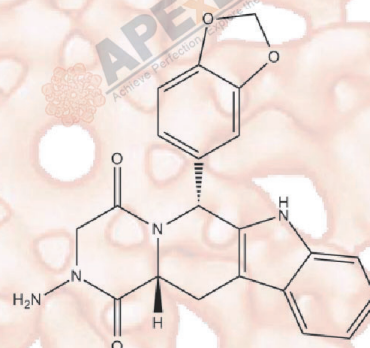


# Product Data Sheet

## Amino Tadalafil

Cat. No.:	C3266
CAS No.:	385769-84-6
Formula:	C <sub>21</sub> H <sub>18</sub> N <sub>4</sub> O <sub>4</sub>
M.Wt:	390.4
Synonyms:	
Target:	Metabolism
Pathway:	PDE
Storage:	Store at -20°C



## Solvent & Solubility

≥57.4 mg/mL in DMSO; insoluble in EtOH; insoluble in H<sub>2</sub>O

In Vitro

	Solvent Concentration	Mass	1mg	5mg	10mg
Preparing Stock Solutions	1 mM		2.5615 mL	12.8074 mL	25.6148 mL
	5 mM		0.5123 mL	2.5615 mL	5.1230 mL
	10 mM		0.2561 mL	1.2807 mL	2.5615 mL

Please refer to the solubility information to select the appropriate solvent.

## Biological Activity

Shortsummary

analog of tadalafil, a potent inhibitor of phosphodiesterase 5

IC<sub>50</sub> & Target

In Vitro

### Cell Viability Assay

Preparation method:

In Vivo

### Animal experiment

Applications:

## Product Citations

See more customer validations on [www.apexbt.com](http://www.apexbt.com).

## References

## Caution

**FOR RESEARCH PURPOSES ONLY.**

**NOT FOR HUMAN, VETERINARY DIAGNOSTIC OR THERAPEUTIC USE.**

*Specific storage and handling information for each product is indicated on the product datasheet. Most APEX BIO products are stable under the recommended conditions. Products are sometimes shipped at a temperature that differs from the recommended storage temperature. Short-term storage of many products are stable in the short-term at temperatures that differ from that required for long-term storage. We ensure that the product is shipped under conditions that will maintain the quality of the reagents. Upon receipt of the product, follow the storage recommendations on the product data sheet.*

**APEX BIO Technology**

**[www.apexbt.com](http://www.apexbt.com)**

7505 Fannin street, Suite 410, Houston, TX 77054.

Tel: +1-832-696-8203 | Fax: +1-832-641-3177 | Email: [info@apexbt.com](mailto:info@apexbt.com)