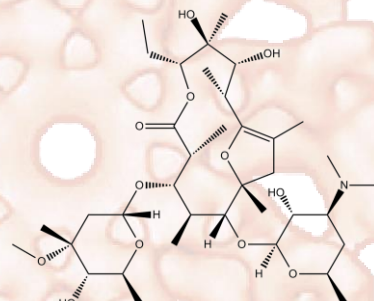


# Product Data Sheet

## Erythromycin A enol ether

<b>Cat. No.:</b>	C3019
<b>CAS No.:</b>	33396-29-1
<b>Formula:</b>	C <sub>37</sub> H <sub>65</sub> NO <sub>12</sub>
<b>M.Wt:</b>	715.9
<b>Synonyms:</b>	BRL 46357ER, EM-201
<b>Target:</b>	GPCR/G protein
<b>Pathway:</b>	Motilin Receptor
<b>Storage:</b>	Store at -20°C



## Solvent & Solubility

≤30mg/ml in DMSO; 15mg/ml in dimethyl formamide

In Vitro

	Solvent Concentration	Mass	1mg	5mg	10mg
Preparing Stock Solutions	1 mM		1.3968 mL	6.9842 mL	13.9684 mL
	5 mM		0.2794 mL	1.3968 mL	2.7937 mL
	10 mM		0.1397 mL	0.6984 mL	1.3968 mL

Please refer to the solubility information to select the appropriate solvent.

## Biological Activity

Shortsummary

β -turn mimic of the peptide hormone motilin

IC<sub>50</sub> & Target

In Vitro

### Cell Viability Assay

Preparation method:

In Vivo

### Animal experiment

Applications:

## Product Citations

See more customer validations on [www.apexbt.com](http://www.apexbt.com).

## References

## Caution

**FOR RESEARCH PURPOSES ONLY.**

**NOT FOR HUMAN, VETERINARY DIAGNOSTIC OR THERAPEUTIC USE.**

*Specific storage and handling information for each product is indicated on the product datasheet. Most APEX BIO products are stable under the recommended conditions. Products are sometimes shipped at a temperature that differs from the recommended storage temperature. Shortterm storage of many products are stable in the short-term at temperatures that differ from that required for long-term storage. We ensure that the product is shipped under conditions that will maintain the quality of the reagents. Upon receipt of the product, follow the storage recommendations on the product data sheet.*

**APEX BIO Technology**

[www.apexbt.com](http://www.apexbt.com)

7505 Fannin street, Suite 410, Houston, TX 77054.

Tel: +1-832-696-8203 | Fax: +1-832-641-3177 | Email: [info@apexbt.com](mailto:info@apexbt.com)

