

9.23
9.23

8.52
8.52
7.57
7.56
7.55
7.54
7.53

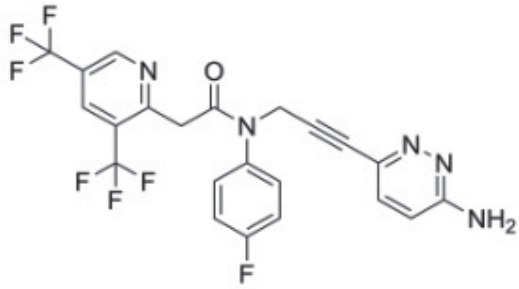
7.38
7.37
7.36
7.34
7.33
7.33
7.25
7.23
6.75
6.72
6.70

4.74

3.88

3.34

2.51
2.50
2.50
2.50
2.49



1.00

1.01

2.02

2.04

1.03

3.04

2.01

2.01

10.0 9.5 9.0 8.5 8.0 7.5 7.0 6.5 6.0 5.5 5.0 4.5 4.0 3.5 3.0 2.5 2.0 1.5 1.0 0.5 0.0

f1 (ppm)