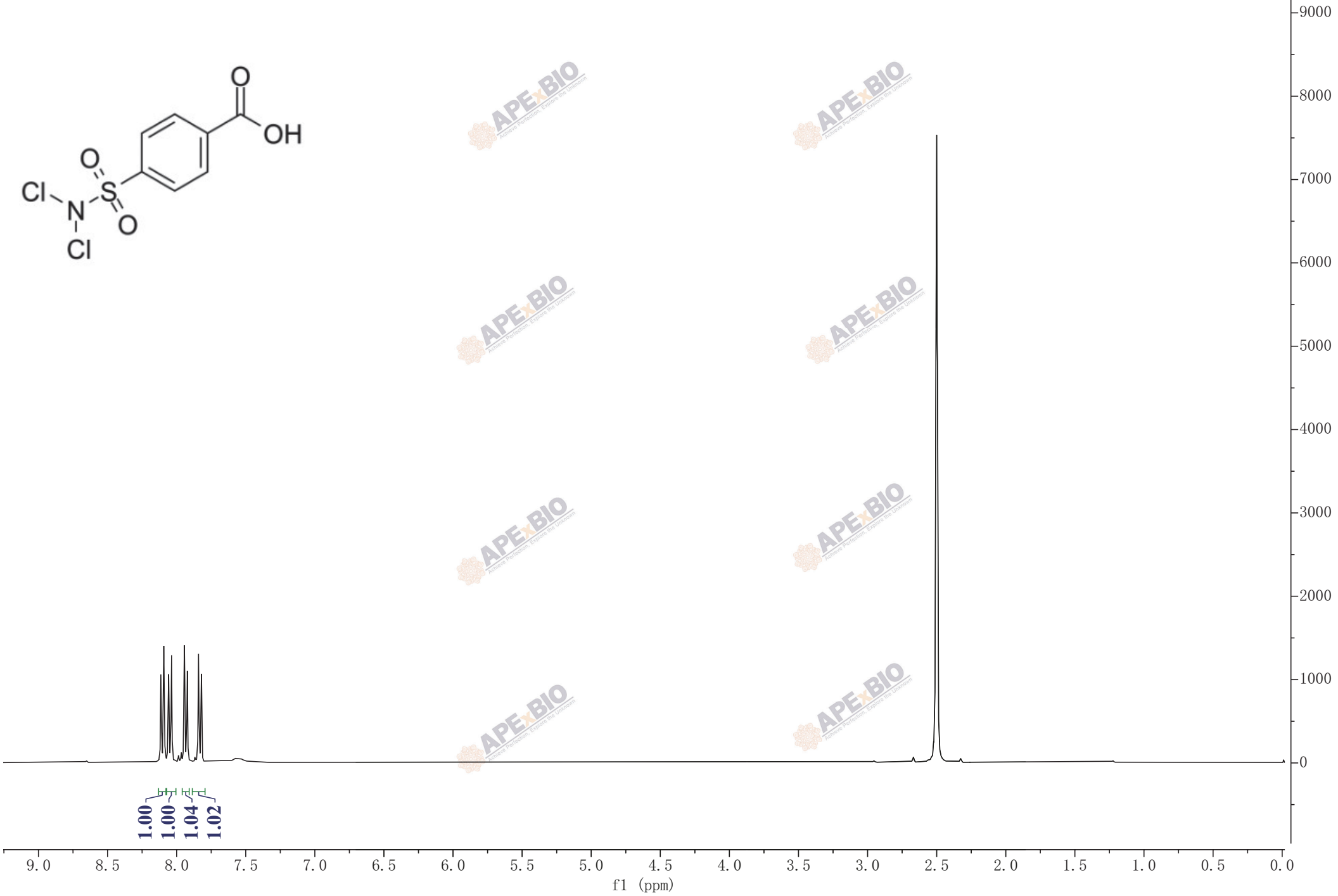
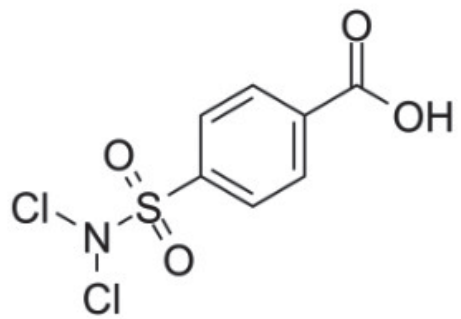


8.12  
8.11  
8.11  
8.10  
8.10  
8.09  
8.09  
8.08  
8.08  
8.07  
8.06  
8.06  
8.05  
8.04  
8.04  
7.99  
7.97  
7.95  
7.94  
7.94  
7.93  
7.92  
7.87  
7.85  
7.84  
7.84  
7.82  
7.82  
7.82  
7.56

2.51  
2.50  
2.50  
2.50  
2.49



1.00  
1.00  
1.04  
1.02

f1 (ppm)