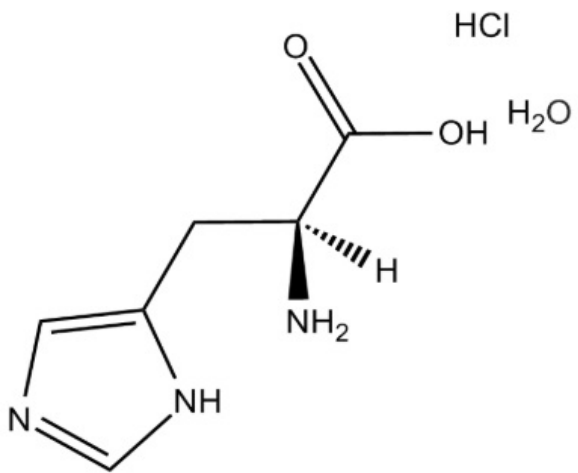


—13.65



9.80  
9.78

7.85

7.84

6.70

6.69

6.65

6.65

6.64

6.64

6.63

5.82

5.80

5.80

5.78

5.20

5.19

4.90

4.87

4.62

4.59

3.89

3.63

3.58

3.51

3.49

3.45

3.34

2.52

2.51

2.50

2.50

2.50

2.50

2.49

1.00

1.00

1.00

4.08

1.03

1.05

1.07

1.06

3.02

1.06

1.19

f1 (ppm)