

## Certificate of Analysis

Product Name: KKL-35

Cat. No.: B8498

Batch No.: 1

### Physical and Chemical Properties

Batch Molecular Formula: C<sub>15</sub>H<sub>9</sub>ClFN<sub>3</sub>O<sub>2</sub>

Batch Molecular Weight: 317.7

Purity: >98%

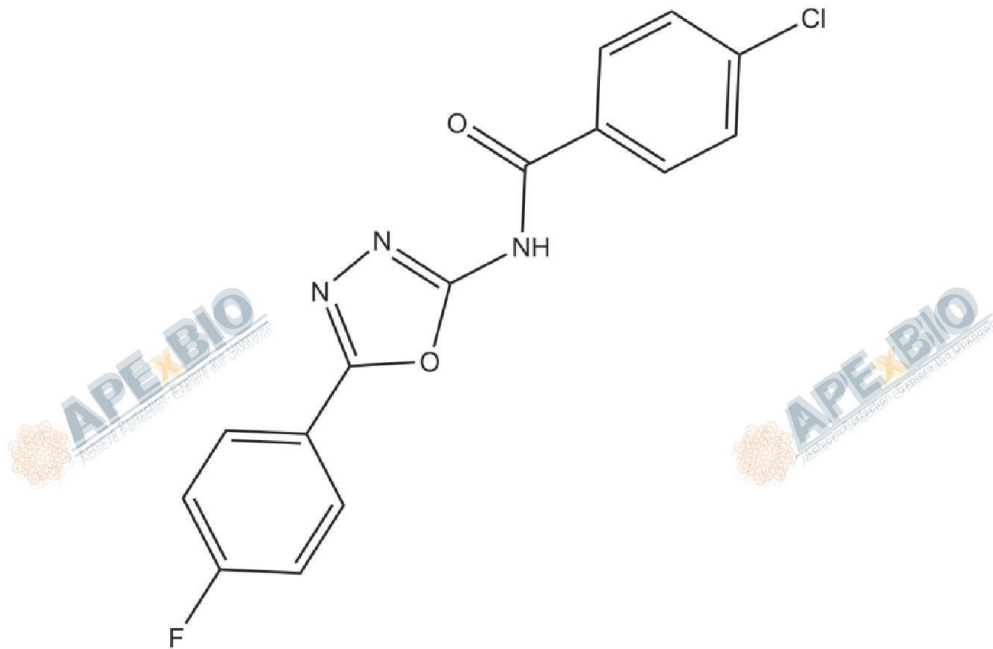
Cas No.: 865285-29-6

### Analytical Data

HPLC: HPLC

Mass Spectrum: Consistent with structure

### Structure



Caution

**FOR RESEARCH PURPOSES ONLY.**

**NOT FOR HUMAN, VETERINARY DIAGNOSTIC OR THERAPEUTIC USE.**

**APEX BIO Technology**

**[www.apexbt.com](http://www.apexbt.com)**

7505 Fannin street, Suite 410, Houston, TX 77054.

Tel: +1-832-696-8203 | Fax: +1-832-641-3177 | Email: [info@apexbt.com](mailto:info@apexbt.com)