

# High Performance Liquid Chromatography

## Analysis Information

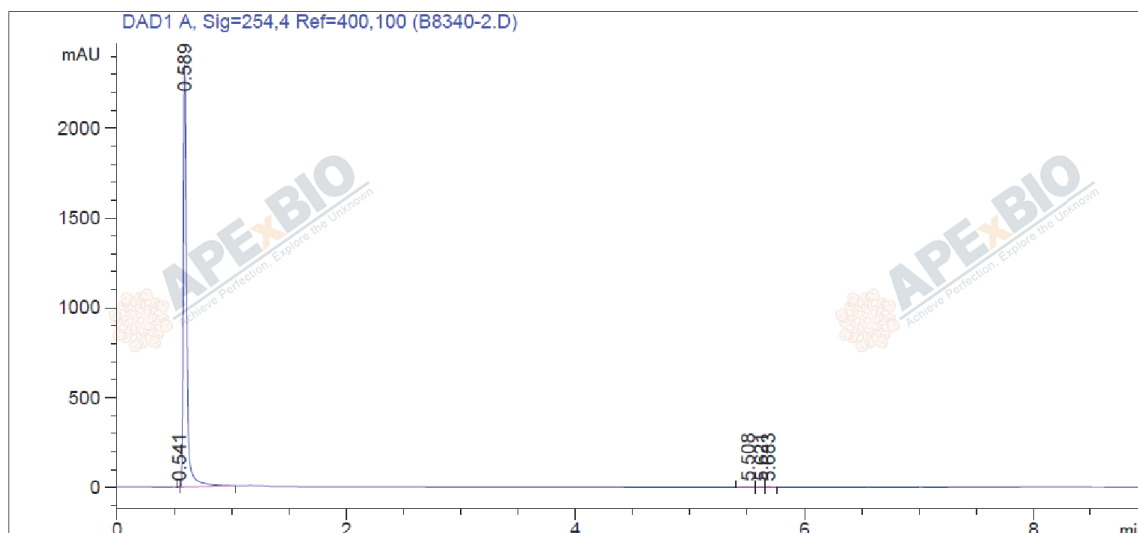
**Product Name:** N1-Methylpseudouridine  
**Operator:** David  
**Injection Date:** 10/12/2021 12:47:03 PM  
**Batch No.:** 2

## HPLC Condition

**Column :** Athena C18, 3 $\mu$ m, 2.1mm  $\times$  100 mm  
**Solvent A:** ACN+0.1%TFA  
**Solvent B:** H2O+0.1%TFA  
**Gradient:**

Time	A	B
0.0min	0%	100%
1.5min	0%	100%
6.0min	95%	5%
9.0min	95%	5%
9.0min	Stop	Stop

**Flow rate:** 0.46ml/min  
**Wavelength:** 254nm  
**Volume:** 3 $\mu$ l



Rank	RetTime(min)	Area(mAU*s)	Area %
1	0.541	3.77787	0.0773
2	0.589	4862.71094	99.4426
3	5.508	11.05880	0.2262
4	5.621	5.62788	0.1151
5	5.683	6.79394	0.1389

## Caution

**FOR RESEARCH PURPOSES ONLY.**

**NOT FOR HUMAN, VETERINARY DIAGNOSTIC OR THERAPEUTIC USE.**

**APEX BIO Technology**

**www.apexbt.com**

7505 Fannin street, Suite 410, Houston, TX 77054.

Tel: +1-832-696-8203 | Fax: +1-832-641-3177 | Email: info@apexbt.com