

## 1. Analysis Information

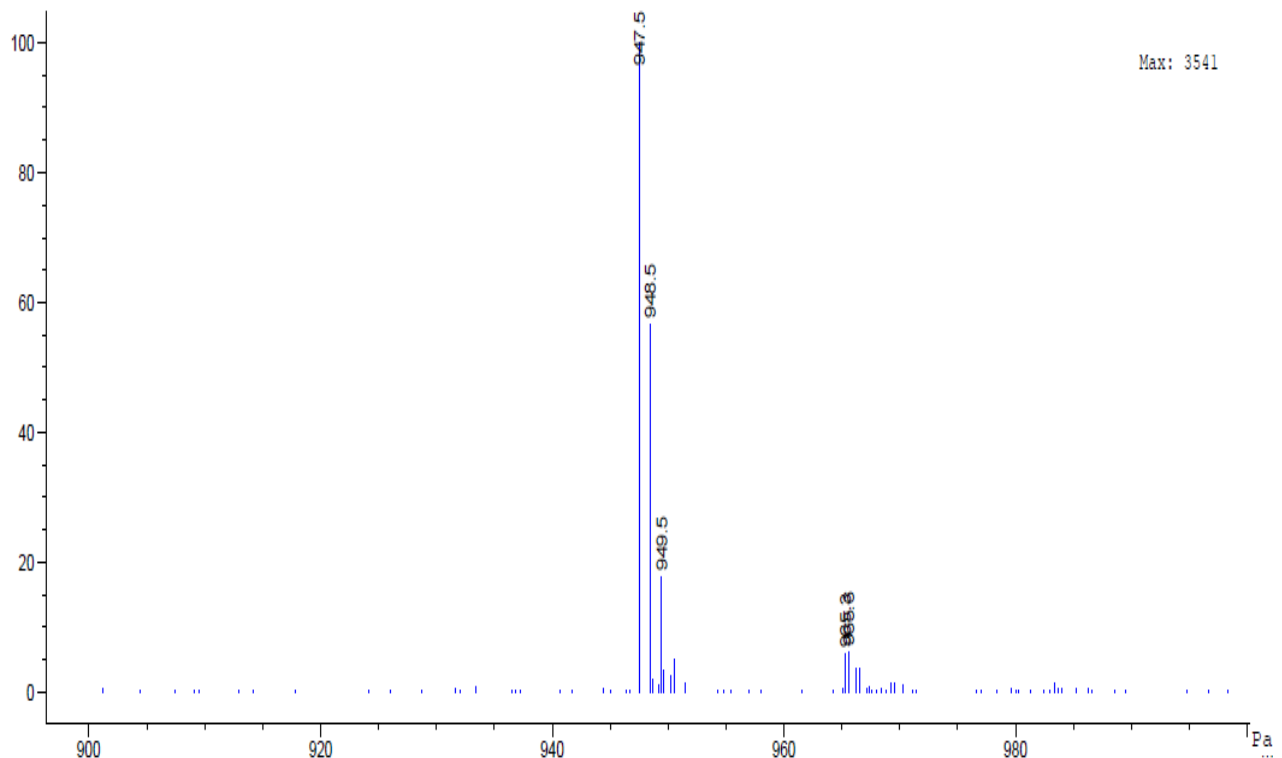
Product Name:	PF 1022A
Operator:	David
Injection Date:	5/20/2018 04:44:42 PM
Inj. Volume:	1
Batch No.:	1

## 2. Acquisition Parameter

Probe:	ESI
Gas Temp:	350°C
Gas Flow:	11L/min
Nebulizer:	50psi
VCap:	4000v
Fragmentor:	70v
Reference:	m/z 121.050873, 922.009798
T.Flow:	0.3ml/min
B.conc:	20%H2O/80%ACN

## 3. Result

\*MSD2 SPC, time=1.921:2.699 of D:\B8018.D MM-ES+APCI, Neg, Scan, Frag: 70



Molecular Weight:	949.18
m/z(M-2H) Base Peak :	947.5
m/z(M-H) Base Peak :	948.5