

# High Performance Liquid Chromatography

## Analysis Information

**Product Name:** L-Glutathione Reduced  
**Operator:** David  
**Injection Date:** 9/5/2018 2:30:46 PM  
**Batch No.:** 3

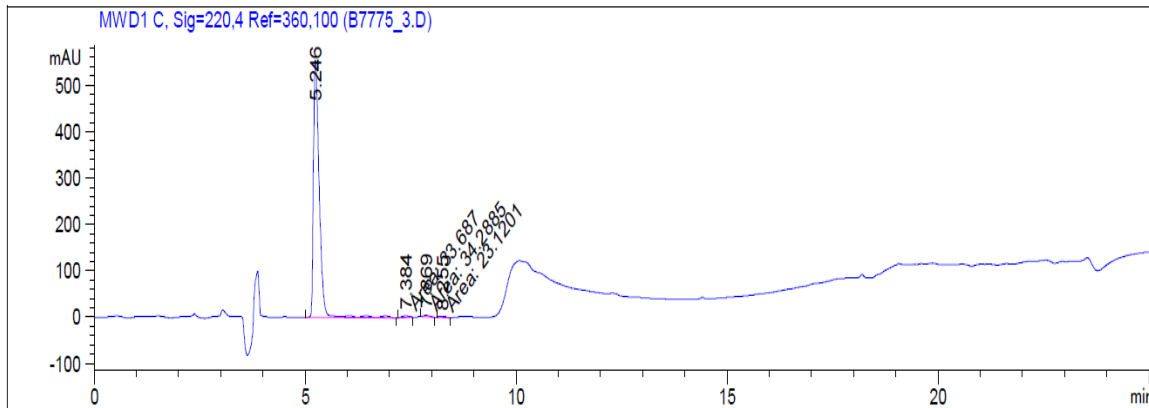
## HPLC Condition

**Column :** ABoston uni-C18 5 $\mu$ m 4.6mm x 250mm  
**Solvent A:** H2O+1% TFA  
**Solvent B:** ACN+1% TFA  
**Gradient:**

Time	A	B
0.0min	95%	5%
5.0min	95%	5%
15.0min	5%	95%
20.0min	0%	100%
25.0min	0%	100%
25.1min	95%	5%
25.1min	Stop	Stop

**Flow rate:** 1ml/min  
**Wavelength:** 220nm  
**Volume:** 5 $\mu$ l

## Result



Rank	RetTime(min)	Area(mAU*s)	Area %
1	5.246	5364.59912	98.3303
2	7.384	33.68695	0.6175
3	7.869	34.28849	0.6285
4	8.255	23.12010	0.4238

## Caution

**FOR RESEARCH PURPOSES ONLY.**

**NOT FOR HUMAN, VETERINARY DIAGNOSTIC OR THERAPEUTIC USE.**

**APEX BIO Technology**

[www.apexbt.com](http://www.apexbt.com)

7505 Fannin street, Suite 410, Houston, TX 77054.

Tel: +1-832-696-8203 | Fax: +1-832-641-3177 | Email: [info@apexbt.com](mailto:info@apexbt.com)