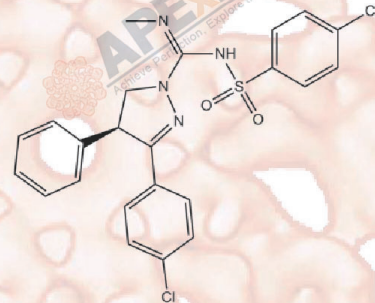


# Product Data Sheet

## (±)-SLV 319

<b>Cat. No.:</b>	B7689
<b>CAS No.:</b>	362519-49-1
<b>Formula:</b>	C <sub>23</sub> H <sub>20</sub> Cl <sub>2</sub> N <sub>2</sub> O <sub>2</sub> S
<b>M.Wt:</b>	487.4
<b>Synonyms:</b>	
<b>Target:</b>	GPCR/G protein
<b>Pathway:</b>	Cannabinoid Receptor
<b>Storage:</b>	Store at -20°C



### Solvent & Solubility

≥47.7 mg/mL in DMSO; ≥4.85 mg/mL in EtOH with ultrasonic; insoluble in H<sub>2</sub>O

In Vitro	Preparing Stock Solutions	Mass			
		Solvent Concentration	1mg	5mg	10mg
		<b>1 mM</b>	2.0517 mL	10.2585 mL	20.5170 mL
		<b>5 mM</b>	0.4103 mL	2.0517 mL	4.1034 mL
		<b>10 mM</b>	0.2052 mL	1.0259 mL	2.0517 mL

Please refer to the solubility information to select the appropriate solvent.

### Biological Activity

Shortsummary	CB1 receptor antagonist, potent and selective	
IC <sub>50</sub> & Target		
In Vitro	<b>Cell Viability Assay</b>	
	Preparation method:	
In Vivo	<b>Animal experiment</b>	
	Applications:	

### Product Citations

See more customer validations on [www.apexbt.com](http://www.apexbt.com).

## References

## Caution

**FOR RESEARCH PURPOSES ONLY.**

**NOT FOR HUMAN, VETERINARY DIAGNOSTIC OR THERAPEUTIC USE.**

*Specific storage and handling information for each product is indicated on the product datasheet. Most APExBIO products are stable under the recommended conditions. Products are sometimes shipped at a temperature that differs from the recommended storage temperature. Shortterm storage of many products are stable in the short-term at temperatures that differ from that required for long-term storage. We ensure that the product is shipped under conditions that will maintain the quality of the reagents. Upon receipt of the product, follow the storage recommendations on the product data sheet.*

**APExBIO Technology**

**[www.apexbt.com](http://www.apexbt.com)**

7505 Fannin street, Suite 410, Houston, TX 77054.

Tel: +1-832-696-8203 | Fax: +1-832-641-3177 | Email: [info@apexbt.com](mailto:info@apexbt.com)

