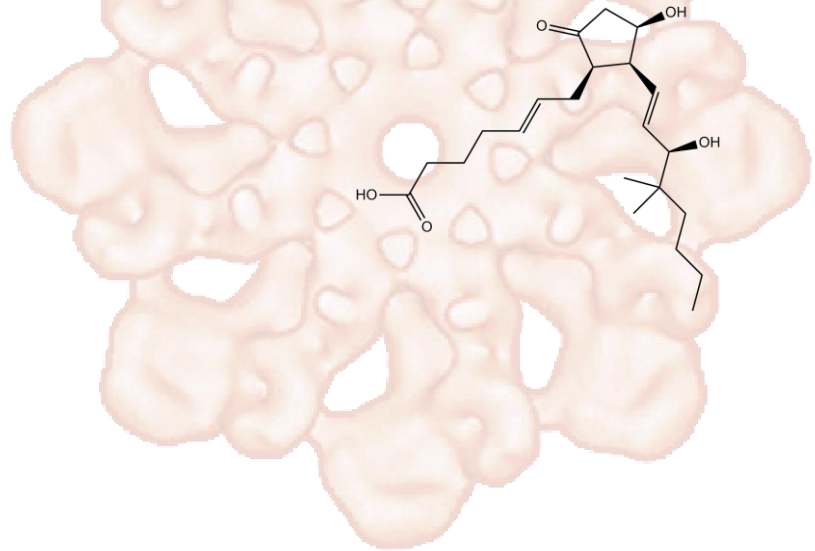


Product Data Sheet

16,16-Dimethyl Prostaglandin E2

Cat. No.:	B7568
CAS No.:	39746-25-3
Formula:	C22H36O5
M.Wt:	380.52
Synonyms:	
Target:	GPCR/G protein
Pathway:	Prostanoid Receptors
Storage:	Store at -20°C



Solvent & Solubility

Soluble in methyl acetate

In Vitro

Preparing Stock Solutions	Solvent Concentration	Mass	1mg	5mg	10mg
	1 mM		2.6280 mL	13.1399 mL	26.2798 mL
	5 mM		0.5256 mL	2.6280 mL	5.2560 mL
	10 mM		0.2628 mL	1.3140 mL	2.6280 mL

Please refer to the solubility information to select the appropriate solvent.

Biological Activity

Shortsummary

derivative of prostaglandin E2

 IC₅₀ & Target

In Vitro

Cell Viability Assay

Preparation method:

In Vivo

Animal experiment

Applications:

Product Citations

See more customer validations on www.apexbt.com.

References

Caution

FOR RESEARCH PURPOSES ONLY.

NOT FOR HUMAN, VETERINARY DIAGNOSTIC OR THERAPEUTIC USE.

Specific storage and handling information for each product is indicated on the product datasheet. Most APEX BIO products are stable under the recommended conditions. Products are sometimes shipped at a temperature that differs from the recommended storage temperature. Shortterm storage of many products are stable in the short-term at temperatures that differ from that required for long-term storage. We ensure that the product is shipped under conditions that will maintain the quality of the reagents. Upon receipt of the product, follow the storage recommendations on the product data sheet.

APEX BIO Technology

www.apexbt.com

7505 Fannin street, Suite 410, Houston, TX 77054.

Tel: +1-832-696-8203 | Fax: +1-832-641-3177 | Email: info@apexbt.com

