



High Performance Liquid Chromatography

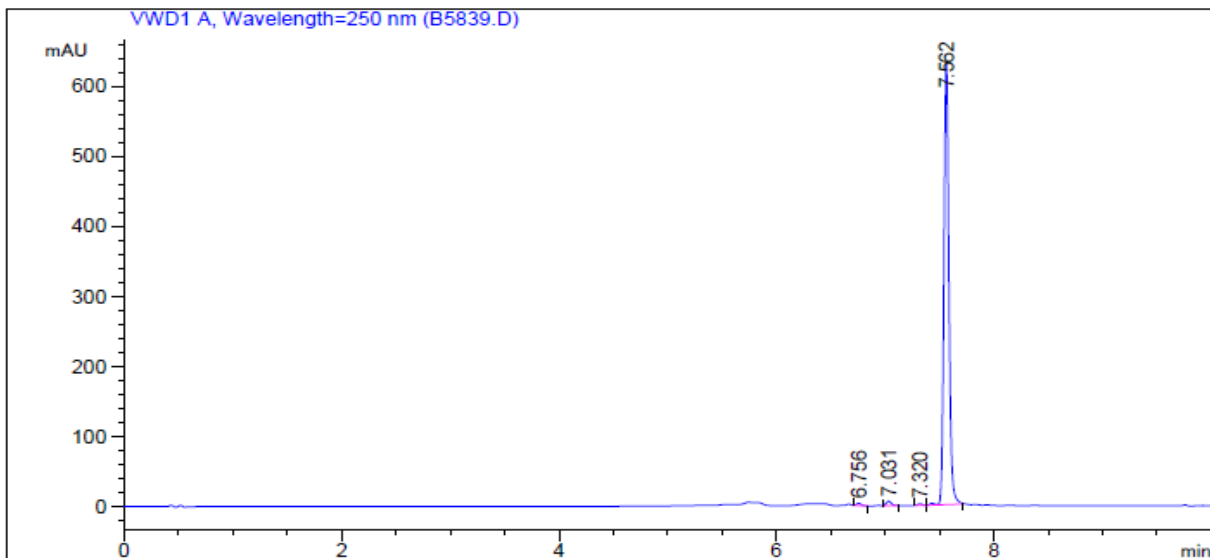
1. Analysis Information

Product Name:	SU6656
Operator:	David
Injection Date:	10/19/2015 9:22:48 AM
Batch No.:	1

2. HPLC Condition

Column:	Athena C18, 3 μ m, 2.1mm \times 100 mm																						
Solvent A:	0.1% H3PO4 in 100% Acetonitrile																						
Solvent B:	0.1% H3PO4 in 100% Water																						
Gradient:	<table border="1"><thead><tr><th>Time</th><th>A</th><th>B</th></tr></thead><tbody><tr><td>0.0min</td><td>0%</td><td>100%</td></tr><tr><td>2.0min</td><td>0%</td><td>100%</td></tr><tr><td>6.0min</td><td>95%</td><td>5%</td></tr><tr><td>9.0min</td><td>95%</td><td>5%</td></tr><tr><td>10.0min</td><td>0%</td><td>100%</td></tr><tr><td>10.0min</td><td>Stop</td><td>Stop</td></tr></tbody></table>		Time	A	B	0.0min	0%	100%	2.0min	0%	100%	6.0min	95%	5%	9.0min	95%	5%	10.0min	0%	100%	10.0min	Stop	Stop
Time	A	B																					
0.0min	0%	100%																					
2.0min	0%	100%																					
6.0min	95%	5%																					
9.0min	95%	5%																					
10.0min	0%	100%																					
10.0min	Stop	Stop																					
Flow rate:	0.4ml/min																						
Wavelength:	250nm																						
Volume:	10 μ l																						

3. Result



Rank	RetTime(min)	Area(mAU*s)	Area %
1	6.756	8.96438	0.4386
2	7.031	21.63545	1.0584
3	7.320	6.79010	0.3322
4	7.562	2006.68811	98.1708