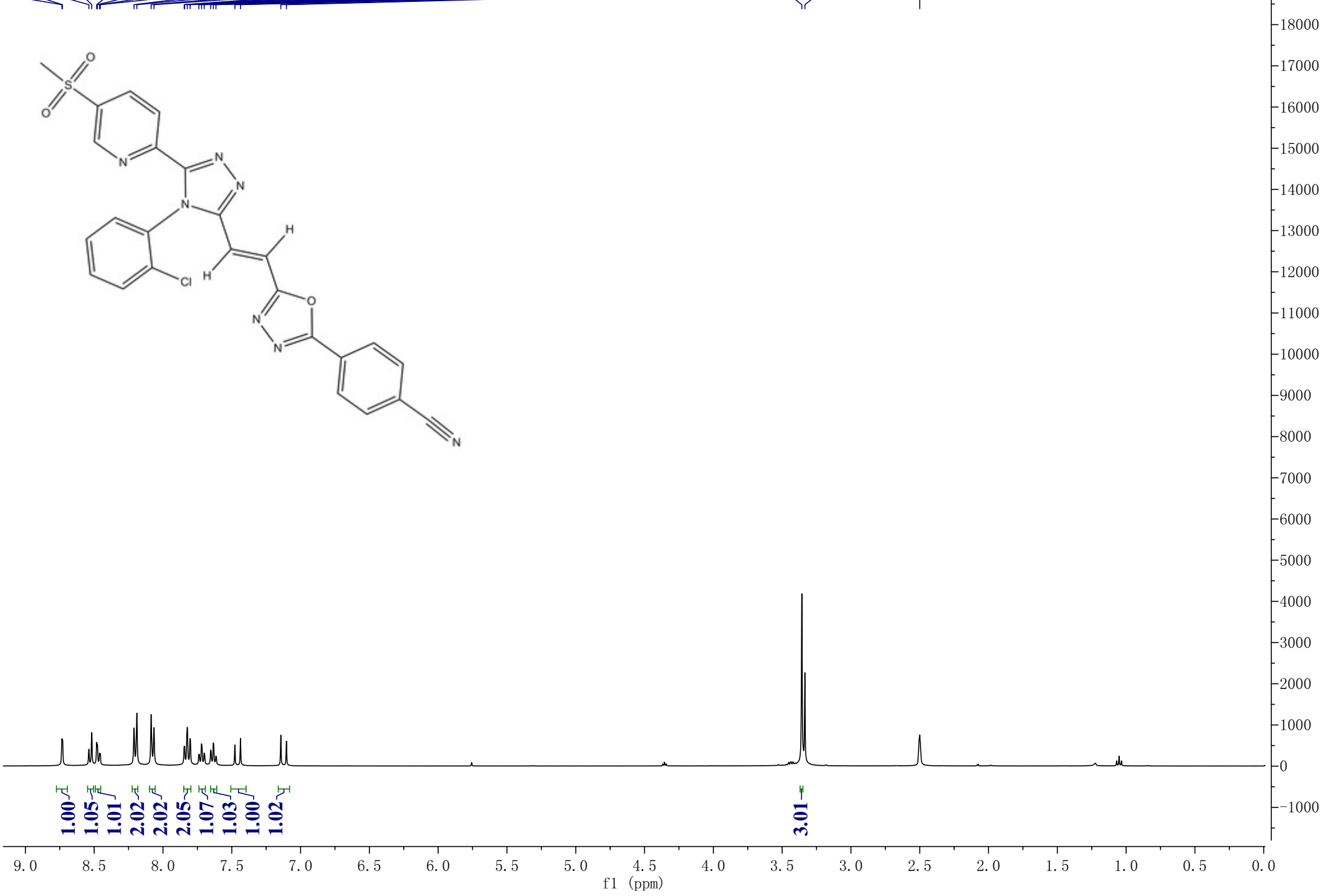
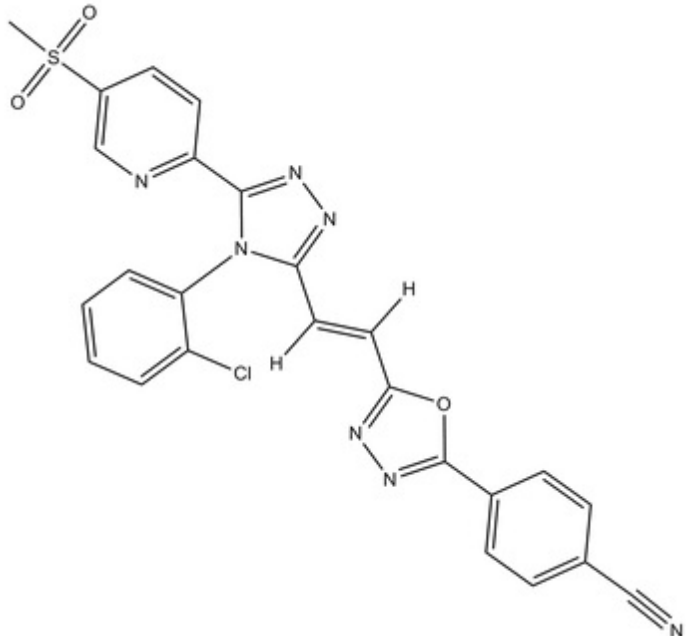


8.73
8.73
8.54
8.52
8.48
8.48
8.46
8.46
8.21
8.19
8.09
8.07
7.85
7.84
7.82
7.80
7.74
7.72
7.70
7.65
7.63
7.62
7.48
7.44
7.14
7.10

3.36
3.33

2.50



1.00
1.05
1.01
2.02
2.02
2.05
1.07
1.03
1.00
1.02

3.01

2.50

f1 (ppm)