

## Certificate of Analysis

Product Name: KML 29

Cat. No.: B5745

Batch No.: 1

### Physical and Chemical Properties

Batch Molecular Formula: C<sub>24</sub>H<sub>21</sub>F<sub>6</sub>NO<sub>7</sub>

Batch Molecular Weight: 549.42

Purity: >98%

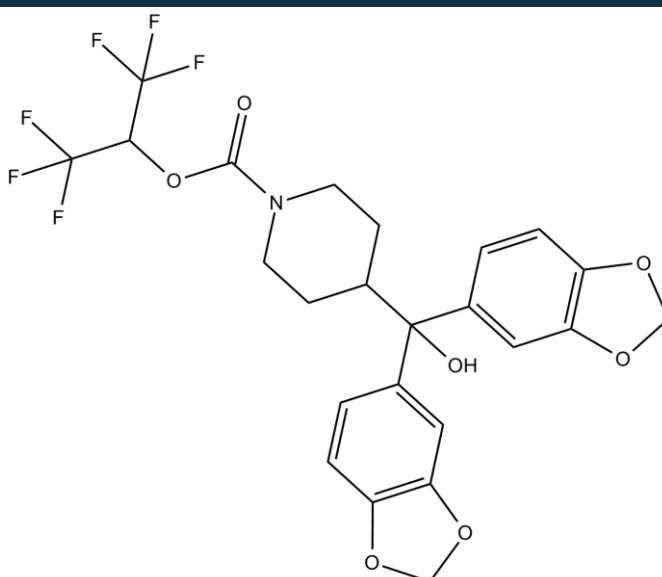
Cas No.: 1380424-42-9

### Analytical Data

HPLC: Shows Min 98% purity

Mass Spectrum: Consistent with structure

### Structure



Caution

**FOR RESEARCH PURPOSES ONLY.**

**NOT FOR HUMAN, VETERINARY DIAGNOSTIC OR THERAPEUTIC USE.**

**APEX BIO Technology**

**[www.apexbt.com](http://www.apexbt.com)**

7505 Fannin Street, Suite 410, Houston, TX 77054.

Tel: +1-832-696-8203 | Fax: +1-832-641-3177 | Email: [info@apexbt.com](mailto:info@apexbt.com)