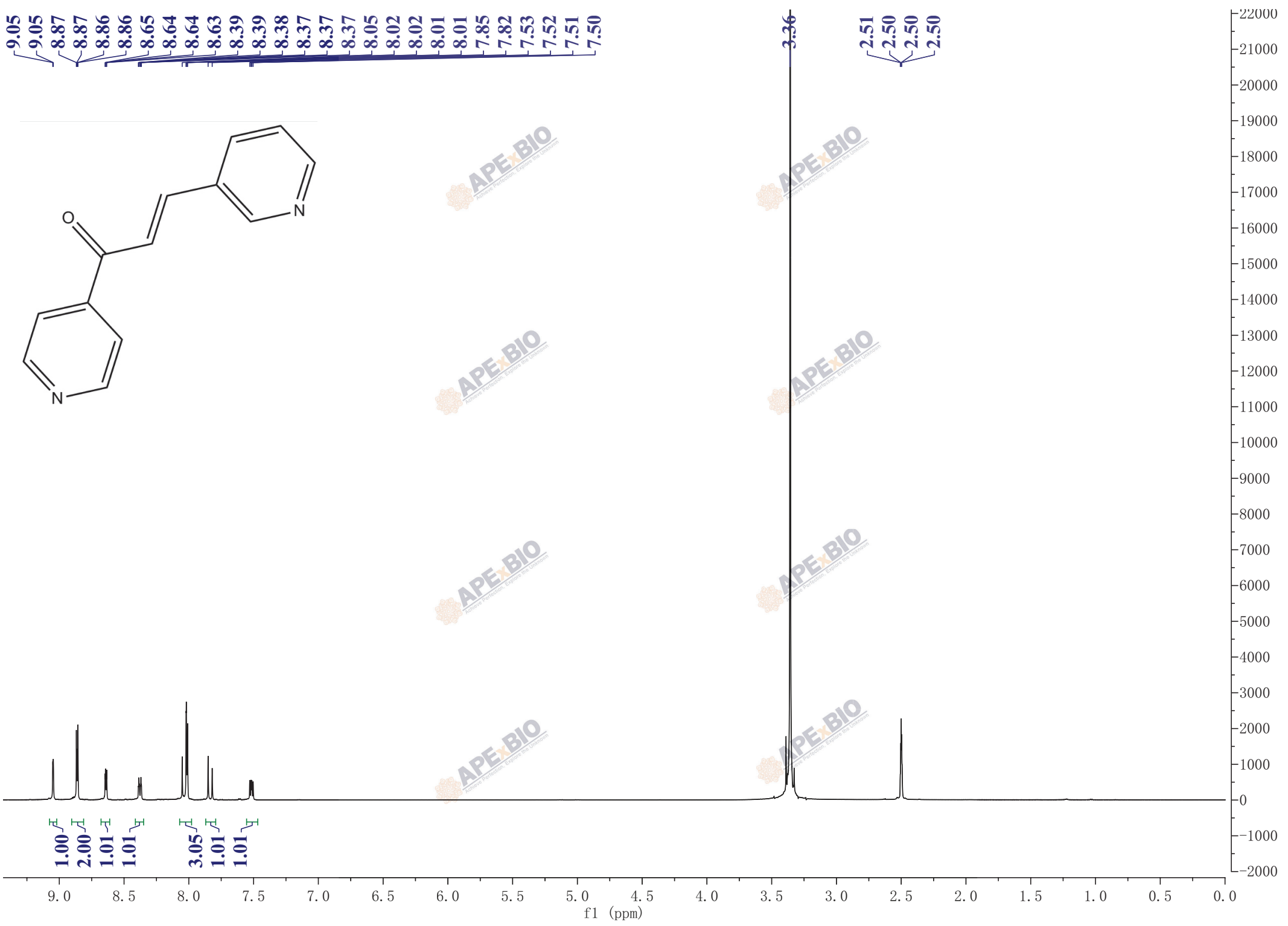
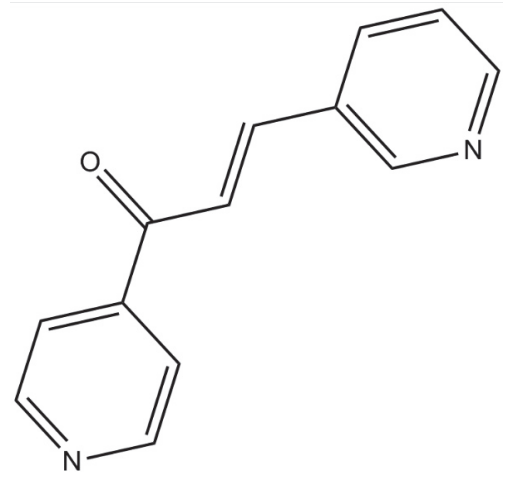


9.05  
9.05  
8.87  
8.87  
8.86  
8.86  
8.65  
8.64  
8.64  
8.63  
8.39  
8.39  
8.38  
8.37  
8.37  
8.37  
8.05  
8.02  
8.02  
8.01  
8.01  
7.85  
7.82  
7.53  
7.52  
7.51  
7.50



1.00  
2.00  
1.01  
1.01  
3.05  
1.01  
1.01

3.36  
2.51  
2.50  
2.50  
2.50

f1 (ppm)