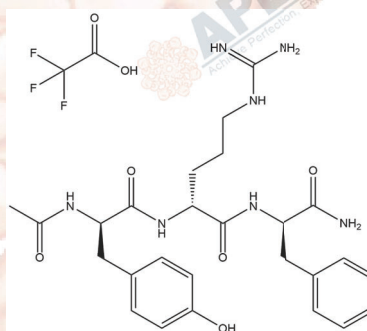


Product Data Sheet

DTP3 TFA

| | |
|------------------|--------------------------|
| Cat. No.: | B4886 |
| CAS No.: | 1809784-29-9 (free-base) |
| Formula: | C28H36F3N7O7 |
| M.Wt: | 639.63 |
| Synonyms: | |
| Target: | MAPK Signaling |
| Pathway: | JNK |
| Storage: | Store at -20°C |



Solvent & Solubility

≥52.7 mg/mL in DMSO; ≥50.5 mg/mL in EtOH; ≥49.7 mg/mL in H₂O

| Preparing Stock Solutions | Mass | | | |
|------------------------------|---------------|-----------|-----------|------------|
| | Solvent | 1mg | 5mg | 10mg |
| | Concentration | | | |
| | 1 mM | 1.9026 mL | 9.5129 mL | 19.0259 mL |
| | 5 mM | 0.3805 mL | 1.9026 mL | 3.8052 mL |
| 10 mM | 0.1903 mL | 0.9513 mL | 1.9026 mL | |

Please refer to the solubility information to select the appropriate solvent.

Biological Activity

| | | |
|---------------------------|-----------------------------------|--|
| Shortsummary | inhibitor of GADD45β/MKK7 complex | |
| IC ₅₀ & Target | | |
| In Vitro | Cell Viability Assay | |
| | Preparation method: | |
| In Vivo | Animal experiment | |
| | Applications: | |

Product Citations

See more customer validations on www.apexbt.com.

References

Caution

FOR RESEARCH PURPOSES ONLY.

NOT FOR HUMAN, VETERINARY DIAGNOSTIC OR THERAPEUTIC USE.

Specific storage and handling information for each product is indicated on the product datasheet. Most APEx BIO products are stable under the recommended conditions. Products are sometimes shipped at a temperature that differs from the recommended storage temperature. Short-term storage of many products are stable in the short-term at temperatures that differ from that required for long-term storage. We ensure that the product is shipped under conditions that will maintain the quality of the reagents. Upon receipt of the product, follow the storage recommendations on the product data sheet.

APEx BIO Technology

www.apexbt.com

7505 Fannin street, Suite 410, Houston, TX 77054.

Tel: +1-832-696-8203 | Fax: +1-832-641-3177 | Email: info@apexbt.com