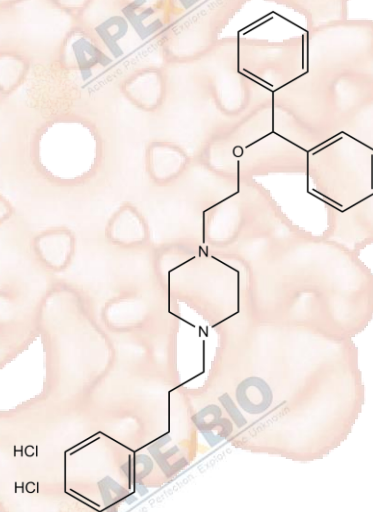


Product Data Sheet

GBR 12935 dihydrochloride

Cat. No.: B4661
CAS No.: 67469-81-2
Formula: C₂₈H₃₆Cl₂N₂O
M.Wt: 487.5
Synonyms:
Target: Neuroscience
Pathway: Dopamine Receptor
Storage: Store at -20°C



Solvent & Solubility

≥24.4 mg/mL in DMSO with gentle warming; insoluble in EtOH; ≥3.63 mg/mL in H₂O with ultrasonic

In Vitro

	Solvent Concentration	Mass	1mg	5mg	10mg
Preparing Stock Solutions	1 mM		2.0513 mL	10.2564 mL	20.5128 mL
	5 mM		0.4103 mL	2.0513 mL	4.1026 mL
	10 mM		0.2051 mL	1.0256 mL	2.0513 mL

Please refer to the solubility information to select the appropriate solvent.

Biological Activity

Shortsummary

dopamine reuptake inhibitor

IC₅₀ & Target

In Vitro

Cell Viability Assay

Preparation method:

In Vivo

Animal experiment

Applications:

Product Citations

See more customer validations on www.apexbt.com.

References

Caution

FOR RESEARCH PURPOSES ONLY.

NOT FOR HUMAN, VETERINARY DIAGNOSTIC OR THERAPEUTIC USE.

Specific storage and handling information for each product is indicated on the product datasheet. Most APEx BIO products are stable under the recommended conditions. Products are sometimes shipped at a temperature that differs from the recommended storage temperature. Shortterm storage of many products are stable in the short-term at temperatures that differ from that required for long-term storage. We ensure that the product is shipped under conditions that will maintain the quality of the reagents. Upon receipt of the product, follow the storage recommendations on the product data sheet.

APEx BIO Technology

www.apexbt.com

7505 Fannin street, Suite 410, Houston, TX 77054.

Tel: +1-832-696-8203 | Fax: +1-832-641-3177 | Email: info@apexbt.com

