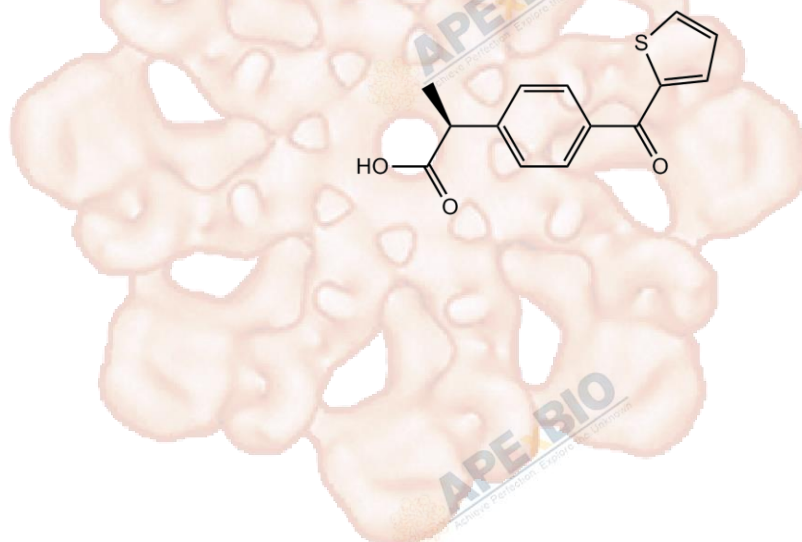


Product Data Sheet

Suprofen

Cat. No.:	B2133
CAS No.:	40828-46-4
Formula:	C ₁₄ H ₁₂ O ₃ S
M.Wt:	260.31
Synonyms:	
Target:	Immunology/Inflammation
Pathway:	TLR
Storage:	Store at -20°C



Solvent & Solubility

insoluble in H₂O; ≥82.8 mg/mL in DMSO; ≥52.3 mg/mL in EtOH

In Vitro

Preparing Stock Solutions	Solvent		Mass		
	Concentration		1mg	5mg	10mg
	1 mM		3.8416 mL	19.2079 mL	38.4157 mL
	5 mM		0.7683 mL	3.8416 mL	7.6831 mL
	10 mM		0.3842 mL	1.9208 mL	3.8416 mL

Please refer to the solubility information to select the appropriate solvent.

Biological Activity

Shortsummary

dual COX-1/COX-2 inhibitor

IC₅₀ & Target

In Vitro

Cell Viability Assay

Preparation method:

In Vivo

Animal experiment

Applications:

Product Citations

See more customer validations on www.apexbt.com.

References

Caution

FOR RESEARCH PURPOSES ONLY.

NOT FOR HUMAN, VETERINARY DIAGNOSTIC OR THERAPEUTIC USE.

Specific storage and handling information for each product is indicated on the product datasheet. Most APEX BIO products are stable under the recommended conditions. Products are sometimes shipped at a temperature that differs from the recommended storage temperature. Shortterm storage of many products are stable in the short-term at temperatures that differ from that required for long-term storage. We ensure that the product is shipped under conditions that will maintain the quality of the reagents. Upon receipt of the product, follow the storage recommendations on the product data sheet.

APEX BIO Technology

www.apexbt.com

7505 Fannin street, Suite 410, Houston, TX 77054.

Tel: +1-832-696-8203 | Fax: +1-832-641-3177 | Email: info@apexbt.com

