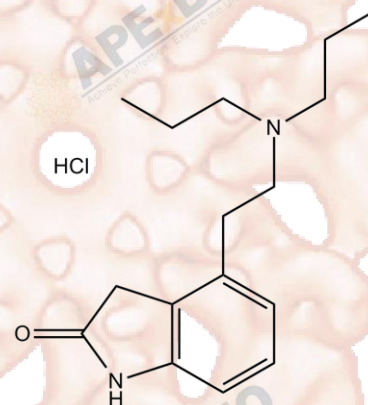


Product Data Sheet

Ropinirole HCl

Cat. No.: B2129
CAS No.: 91374-20-8
Formula: C₁₆H₂₄N₂O·HCl
M.Wt: 296.84
Synonyms:
Target:
Pathway:
Storage: Store at -20°C



Solvent & Solubility

≥14.95 mg/mL in H₂O; ≥2.5 mg/mL in EtOH with gentle warming and ultrasonic; ≥6.73 mg/mL in DMSO with ultrasonic

In Vitro

	Solvent	Mass	1mg	5mg	10mg
Preparing Stock Solutions	Concentration				
	1 mM		3.3688 mL	16.8441 mL	33.6882 mL
	5 mM		0.6738 mL	3.3688 mL	6.7376 mL
	10 mM		0.3369 mL	1.6844 mL	3.3688 mL

Please refer to the solubility information to select the appropriate solvent.

Biological Activity

Shortsummary

selective dopamine D2-receptor agonist

IC₅₀ & Target

In Vitro

Cell Viability Assay

Preparation method:

In Vivo

Animal experiment

Applications:

Product Citations

See more customer validations on www.apexbt.com.

References

Caution

FOR RESEARCH PURPOSES ONLY.

NOT FOR HUMAN, VETERINARY DIAGNOSTIC OR THERAPEUTIC USE.

Specific storage and handling information for each product is indicated on the product datasheet. Most APExBIO products are stable under the recommended conditions. Products are sometimes shipped at a temperature that differs from the recommended storage temperature. Short-term storage of many products are stable in the short-term at temperatures that differ from that required for long-term storage. We ensure that the product is shipped under conditions that will maintain the quality of the reagents. Upon receipt of the product, follow the storage recommendations on the product data sheet.

APExBIO Technology

www.apexbt.com

7505 Fannin street, Suite 410, Houston, TX 77054.

Tel: +1-832-696-8203 | Fax: +1-832-641-3177 | Email: info@apexbt.com

