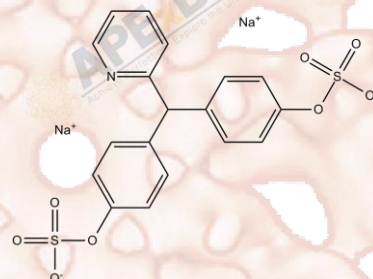


Product Data Sheet

Sodium Picosulfate

Cat. No.: B2027
CAS No.: 10040-45-6
Formula: C₁₈H₁₅NO₈S₂·2Na
M.Wt: 481.41
Synonyms:
Target:
Pathway:
Storage: Store at -20°C



Solvent & Solubility

≥13.05 mg/mL in DMSO; ≥2.69 mg/mL in EtOH; ≥50.3 mg/mL in H₂O

In Vitro

	Solvent	Mass Concentration	1mg	5mg	10mg
Preparing Stock Solutions	1 mM		2.0772 mL	10.3862 mL	20.7723 mL
	5 mM		0.4154 mL	2.0772 mL	4.1545 mL
	10 mM		0.2077 mL	1.0386 mL	2.0772 mL

Please refer to the solubility information to select the appropriate solvent.

Biological Activity

Shortsummary

laxative

IC₅₀ & Target

In Vitro

Cell Viability Assay

Preparation method:

In Vivo

Animal experiment

Applications:

Product Citations

See more customer validations on www.apexbt.com.

References

Caution

FOR RESEARCH PURPOSES ONLY.

NOT FOR HUMAN, VETERINARY DIAGNOSTIC OR THERAPEUTIC USE.

Specific storage and handling information for each product is indicated on the product datasheet. Most APEx BIO products are stable under the recommended conditions. Products are sometimes shipped at a temperature that differs from the recommended storage temperature. Shortterm storage of many products are stable in the short-term at temperatures that differ from that required for long-term storage. We ensure that the product is shipped under conditions that will maintain the quality of the reagents. Upon receipt of the product, follow the storage recommendations on the product data sheet.

APEx BIO Technology

www.apexbt.com

7505 Fannin street, Suite 410, Houston, TX 77054.

Tel: +1-832-696-8203 | Fax: +1-832-641-3177 | Email: info@apexbt.com

