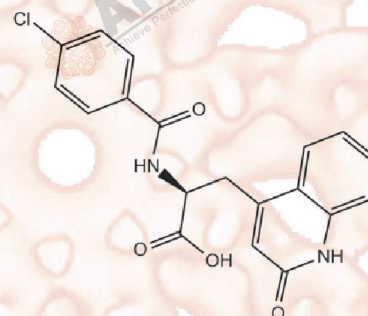


## Product Data Sheet

### Rebamipide

**Cat. No.:** B2018  
**CAS No.:** 90098-04-7  
**Formula:** C<sub>19</sub>H<sub>15</sub>ClN<sub>2</sub>O<sub>4</sub>  
**M.Wt:** 370.79  
**Synonyms:**  
**Target:**  
**Pathway:**  
**Storage:** Store at -20°C



### Solvent & Solubility

insoluble in H<sub>2</sub>O; insoluble in EtOH; ≥10.25 mg/mL in DMSO

In Vitro

	Solvent	Mass Concentration	Mass		
			1mg	5mg	10mg
Preparing Stock Solutions		1 mM	2.6969 mL	13.4847 mL	26.9694 mL
		5 mM	0.5394 mL	2.6969 mL	5.3939 mL
		10 mM	0.2697 mL	1.3485 mL	2.6969 mL

Please refer to the solubility information to select the appropriate solvent.

### Biological Activity

Shortsummary

cholecystokinin type 1 (CCK1) receptor inhibitor

IC<sub>50</sub> & Target

In Vitro

**Cell Viability Assay**

Preparation method:

In Vivo

**Animal experiment**

Applications:

### Product Citations

See more customer validations on [www.apexbt.com](http://www.apexbt.com).

## References

## Caution

**FOR RESEARCH PURPOSES ONLY.**

**NOT FOR HUMAN, VETERINARY DIAGNOSTIC OR THERAPEUTIC USE.**

Specific storage and handling information for each product is indicated on the product datasheet. Most APEx BIO products are stable under the recommended conditions. Products are sometimes shipped at a temperature that differs from the recommended storage temperature. Shortterm storage of many products are stable in the short-term at temperatures that differ from that required for long-term storage. We ensure that the product is shipped under conditions that will maintain the quality of the reagents. Upon receipt of the product, follow the storage recommendations on the product data sheet.

**APEx BIO Technology**

**[www.apexbt.com](http://www.apexbt.com)**

7505 Fannin street, Suite 410, Houston, TX 77054.

Tel: +1-832-696-8203 | Fax: +1-832-641-3177 | Email: [info@apexbt.com](mailto:info@apexbt.com)