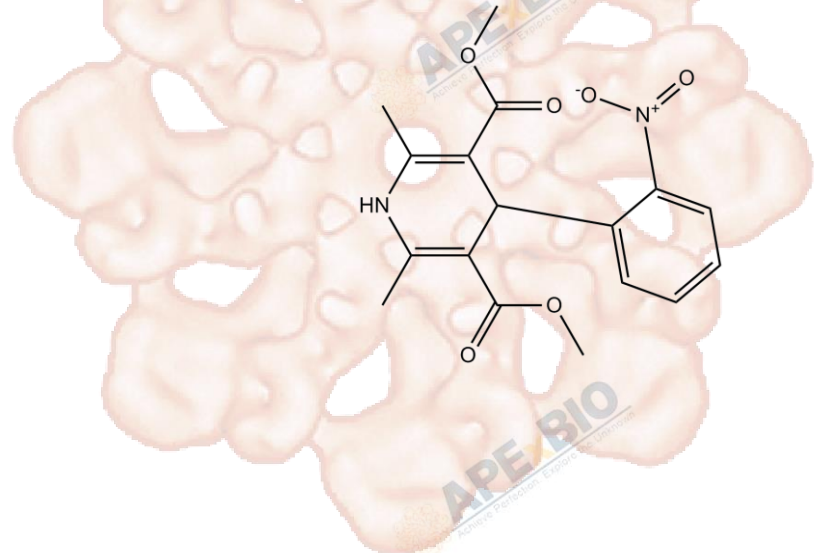


Product Data Sheet

Nifedipine

Cat. No.:	B1988
CAS No.:	21829-25-4
Formula:	C ₁₇ H ₁₈ N ₂ O ₆
M.Wt:	346.33
Synonyms:	
Target:	
Pathway:	
Storage:	Store at -20°C



Solvent & Solubility

insoluble in H₂O; ≥ 15.75 mg/mL in DMSO; ≥ 7.14 mg/mL in EtOH with ultrasonic

In Vitro

Preparing Stock Solutions	Solvent	Mass		
		1mg	5mg	10mg
	Concentration			
	1 mM	2.8874 mL	14.4371 mL	28.8742 mL
	5 mM	0.5775 mL	2.8874 mL	5.7748 mL
	10 mM	0.2887 mL	1.4437 mL	2.8874 mL

Please refer to the solubility information to select the appropriate solvent.

Biological Activity

Shortsummary L-type calcium channel blocker

IC₅₀ & Target

In Vitro

Cell Viability Assay

Preparation method:

In Vivo

Animal experiment

Applications:

Product Citations

1. Wang H, Tian L, et al. "The Osteogenic Niche Is a Calcium Reservoir of Bone Micrometastases and Confers Unexpected Therapeutic Vulnerability." *Cancer Cell*. 2018 Nov 12;34(5):823-839.e7.PMID:30423299
2. House JS, Grimm FA, Jet al. "A Pipeline for High-Throughput Concentration Response Modeling of Gene Expression for Toxicogenomics." *Front Genet*. 2017 Nov 1;8:168.PMID:29163636

See more customer validations on www.apexbt.com.

References

Caution

FOR RESEARCH PURPOSES ONLY.

NOT FOR HUMAN, VETERINARY DIAGNOSTIC OR THERAPEUTIC USE.

Specific storage and handling information for each product is indicated on the product datasheet. Most APExBIO products are stable under the recommended conditions. Products are sometimes shipped at a temperature that differs from the recommended storage temperature. Shortterm storage of many products are stable in the short-term at temperatures that differ from that required for long-term storage. We ensure that the product is shipped under conditions that will maintain the quality of the reagents. Upon receipt of the product, follow the storage recommendations on the product data sheet.

APExBIO Technology

www.apexbt.com

7505 Fannin street, Suite 410, Houston, TX 77054.

Tel: +1-832-696-8203 | Fax: +1-832-641-3177 | Email: info@apexbt.com

