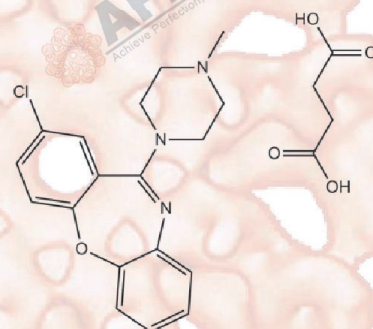


Product Data Sheet

Loxapine Succinate

Cat. No.: B1783
CAS No.: 27833-64-3
Formula: C₁₈H₁₈ClN₃O·C₄H₆O₄
M.Wt: 445.9
Synonyms:
Target:
Pathway:
Storage: Store at -20°C



Solvent & Solubility

≥22.29 mg/mL in DMSO; insoluble in H₂O; ≥13.68 mg/mL in EtOH with ultrasonic

In Vitro

	Solvent	Mass Concentration	1mg	5mg	10mg
Preparing Stock Solutions		1 mM	2.2427 mL	11.2133 mL	22.4266 mL
		5 mM	0.4485 mL	2.2427 mL	4.4853 mL
		10 mM	0.2243 mL	1.1213 mL	2.2427 mL

Please refer to the solubility information to select the appropriate solvent

Biological Activity

Shortsummary

Dopamine receptor antagonist

IC₅₀ & Target

In Vitro

Cell Viability Assay

Preparation method:

In Vivo

Animal experiment

Applications:

Caution

FOR RESEARCH PURPOSES ONLY.

NOT FOR HUMAN, VETERINARY DIAGNOSTIC OR THERAPEUTIC USE.

Specific storage and handling information for each product is indicated on the product datasheet. Most APEX BIO products are stable under the recommended conditions. Products are sometimes shipped at a temperature that differs from the recommended storage temperature. Short-term storage of many products are stable in the short-term at temperatures that differ from that required for long-term storage. We ensure that the product is shipped under conditions that will maintain the quality of the reagents. Upon receipt of the product, follow the storage recommendations on the product data sheet.



APEX BIO Technology

www.apexbt.com

7505 Fannin street, Suite 410, Houston, TX 77054.

Tel: +1-832-696-8203 | Fax: +1-832-641-3177 | Email: info@apexbt.com

