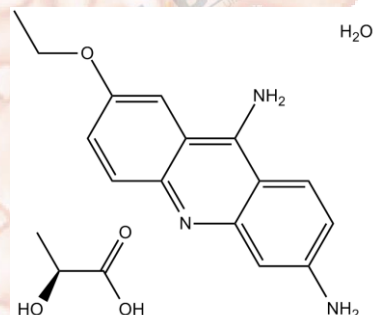


Product Data Sheet

Ethacridine lactate monohydrate

Cat. No.: B1749
CAS No.: 6402-23-9
Formula: C₁₅H₁₅N₃O·C₃H₆O₃·H₂O
M.Wt: 361.39
Synonyms:
Target:
Pathway:
Storage: Store at -20°C



Solvent & Solubility

≥17.05 mg/mL in DMSO; ≥25.1 mg/mL in H₂O; ≥3.73 mg/mL in EtOH with ultrasonic

In Vitro

	Solvent	Mass Concentration	Mass		
			1mg	5mg	10mg
Preparing Stock Solutions		1 mM	2.7671 mL	13.8355 mL	27.6709 mL
		5 mM	0.5534 mL	2.7671 mL	5.5342 mL
		10 mM	0.2767 mL	1.3835 mL	2.7671 mL

Please refer to the solubility information to select the appropriate solvent.

Biological Activity

Shortsummary

Antiseptic agent

IC₅₀ & Target

In Vitro

Cell Viability Assay

Preparation method:

In Vivo

Animal experiment

Applications:

Product Citations

See more customer validations on www.apexbt.com.

References

Caution

FOR RESEARCH PURPOSES ONLY.

NOT FOR HUMAN, VETERINARY DIAGNOSTIC OR THERAPEUTIC USE.

Specific storage and handling information for each product is indicated on the product datasheet. Most APEx BIO products are stable under the recommended conditions. Products are sometimes shipped at a temperature that differs from the recommended storage temperature. Shortterm storage of many products are stable in the short-term at temperatures that differ from that required for long-term storage. We ensure that the product is shipped under conditions that will maintain the quality of the reagents. Upon receipt of the product, follow the storage recommendations on the product data sheet.

APEx BIO Technology

www.apexbt.com

7505 Fannin street, Suite 410, Houston, TX 77054.

Tel: +1-832-696-8203 | Fax: +1-832-641-3177 | Email: info@apexbt.com

