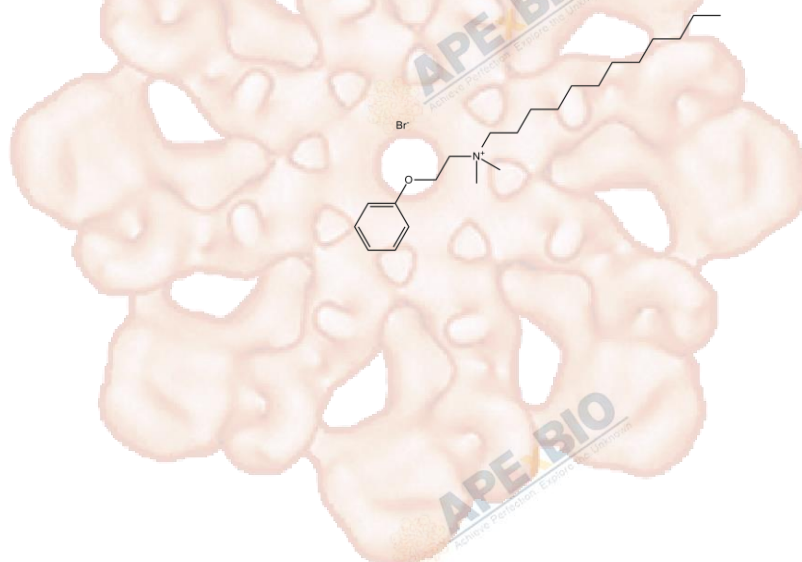


## Product Data Sheet

### Domiphen Bromide

**Cat. No.:** B1733  
**CAS No.:** 538-71-6  
**Formula:** C<sub>22</sub>H<sub>40</sub>NO·Br  
**M.Wt:** 414.46  
**Synonyms:**  
**Target:**  
**Pathway:**  
**Storage:** Store at -20°C



### Solvent & Solubility

≥11.55 mg/mL in DMSO; ≥14.33 mg/mL in H<sub>2</sub>O with ultrasonic; ≥48.9 mg/mL in EtOH

In Vitro

	Solvent	Mass Concentration	Mass		
			1mg	5mg	10mg
Preparing Stock Solutions	1 mM		2.4128 mL	12.0639 mL	24.1278 mL
	5 mM		0.4826 mL	2.4128 mL	4.8256 mL
	10 mM		0.2413 mL	1.2064 mL	2.4128 mL

Please refer to the solubility information to select the appropriate solvent.

### Biological Activity

Shortsummary

Quaternary ammonium antiseptic

IC<sub>50</sub> & Target

In Vitro

Cell Viability Assay

Preparation method:

In Vivo

Animal experiment

Applications:

### Product Citations

See more customer validations on [www.apexbt.com](http://www.apexbt.com).

## References

## Caution

**FOR RESEARCH PURPOSES ONLY.**

**NOT FOR HUMAN, VETERINARY DIAGNOSTIC OR THERAPEUTIC USE.**

Specific storage and handling information for each product is indicated on the product datasheet. Most APEx BIO products are stable under the recommended conditions. Products are sometimes shipped at a temperature that differs from the recommended storage temperature. Shortterm storage of many products are stable in the short-term at temperatures that differ from that required for long-term storage. We ensure that the product is shipped under conditions that will maintain the quality of the reagents. Upon receipt of the product, follow the storage recommendations on the product data sheet.

**APEx BIO Technology**

**[www.apexbt.com](http://www.apexbt.com)**

7505 Fannin street, Suite 410, Houston, TX 77054.

Tel: +1-832-696-8203 | Fax: +1-832-641-3177 | Email: [info@apexbt.com](mailto:info@apexbt.com)

