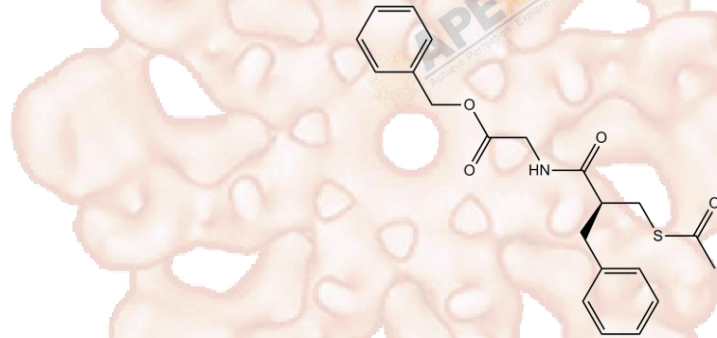


# Product Data Sheet

## Racecadotril

<b>Cat. No.:</b>	B1649
<b>CAS No.:</b>	81110-73-8
<b>Formula:</b>	C <sub>21</sub> H <sub>23</sub> NO <sub>4</sub> S
<b>M.Wt:</b>	385.48
<b>Synonyms:</b>	
<b>Target:</b>	Others
<b>Pathway:</b>	Endopeptidase
<b>Storage:</b>	Store at -20°C



### Solvent & Solubility

insoluble in H<sub>2</sub>O; ≥103 mg/mL in DMSO; ≥18.45 mg/mL in EtOH

In Vitro

Preparing Stock Solutions	Solvent		Mass		
	Concentration		1mg	5mg	10mg
	1 mM		2.5942 mL	12.9708 mL	25.9417 mL
	5 mM		0.5188 mL	2.5942 mL	5.1883 mL
	10 mM		0.2594 mL	1.2971 mL	2.5942 mL

Please refer to the solubility information to select the appropriate solvent.

### Biological Activity

Shortsummary: Potent enkephalinase inhibitor

IC<sub>50</sub> & Target:

In Vitro

#### Cell Viability Assay

Preparation method:

In Vivo

#### Animal experiment

Applications:

### Product Citations

See more customer validations on [www.apexbt.com](http://www.apexbt.com).

## References

## Caution

**FOR RESEARCH PURPOSES ONLY.**

**NOT FOR HUMAN, VETERINARY DIAGNOSTIC OR THERAPEUTIC USE.**

*Specific storage and handling information for each product is indicated on the product datasheet. Most APEX BIO products are stable under the recommended conditions. Products are sometimes shipped at a temperature that differs from the recommended storage temperature. Shortterm storage of many products are stable in the short-term at temperatures that differ from that required for long-term storage. We ensure that the product is shipped under conditions that will maintain the quality of the reagents. Upon receipt of the product, follow the storage recommendations on the product data sheet.*

**APEX BIO Technology**

**[www.apexbt.com](http://www.apexbt.com)**

7505 Fannin street, Suite 410, Houston, TX 77054.

Tel: +1-832-696-8203 | Fax: +1-832-641-3177 | Email: [info@apexbt.com](mailto:info@apexbt.com)

