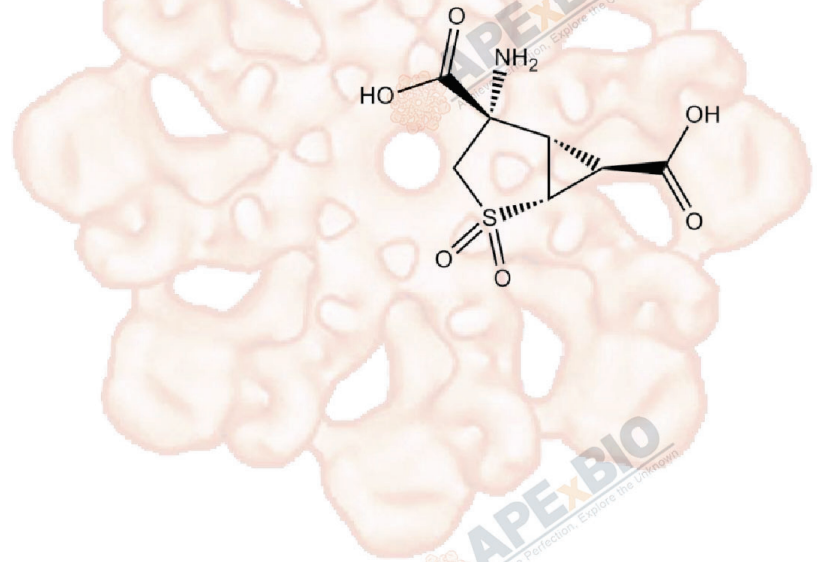


Product Data Sheet

LY404039

Cat. No.: B1626
CAS No.: 635318-11-5
Formula: C7H9NO6S
M.Wt: 235.21
Synonyms:
Target: Neuroscience
Pathway: Dopamine Receptor
Storage: Store at -20°C



Solvent & Solubility

insoluble in DMSO; insoluble in EtOH; insoluble in H2O

In Vitro

Preparing	Solvent	Mass	1mg	5mg	10mg
		Concentration			
Stock Solutions	1 mM		4.2515 mL	21.2576 mL	42.5152 mL
	5 mM		0.8503 mL	4.2515 mL	8.5030 mL
	10 mM		0.4252 mL	2.1258 mL	4.2515 mL

Please refer to the solubility information to select the appropriate solvent.

Biological Activity

Shortsummary: MGlU2 and mGlu3 receptors agonist

IC₅₀ & Target

In Vitro

Cell Viability Assay

Preparation method:

In Vivo

Animal experiment

Applications:

Product Citations

See more customer validations on www.apexbt.com.

References

Caution

FOR RESEARCH PURPOSES ONLY.

NOT FOR HUMAN, VETERINARY DIAGNOSTIC OR THERAPEUTIC USE.

Specific storage and handling information for each product is indicated on the product datasheet. Most APExBIO products are stable under the recommended conditions. Products are sometimes shipped at a temperature that differs from the recommended storage temperature. Shortterm storage of many products are stable in the short-term at temperatures that differ from that required for long-term storage. We ensure that the product is shipped under conditions that will maintain the quality of the reagents. Upon receipt of the product, follow the storage recommendations on the product data sheet.

APExBIO Technology

www.apexbt.com

7505 Fannin street, Suite 410, Houston, TX 77054.

Tel: +1-832-696-8203 | Fax: +1-832-641-3177 | Email: info@apexbt.com

