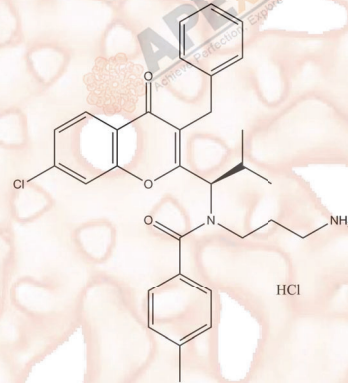


Product Data Sheet

SB743921

Cat. No.: B1590
CAS No.: 940929-33-9
Formula: C₃₁H₃₄ClI₂N₂O₃
M.Wt: 553.53
Synonyms:
Target: Cell Cycle/Checkpoint
Pathway: Ksp
Storage: Store at -20°C



Solvent & Solubility

≥ 55.4mg/mL in DMSO

In Vitro

Preparing	Solvent	Mass		
		1mg	5mg	10mg
Stock Solutions	Concentration			
	1 mM	1.8066 mL	9.0329 mL	18.0659 mL
	5 mM	0.3613 mL	1.8066 mL	3.6132 mL
	10 mM	0.1807 mL	0.9033 mL	1.8066 mL

Please refer to the solubility information to select the appropriate solvent.

Biological Activity

Shortsummary

Potent KSP inhibitor

IC₅₀ & Target

0.06 nM (KSP (MX1 cells)), 0.07 nM (KSP (Colo205 cells)), 0.1 nM(Ki) (KSP), 0.2 nM (KSP (SKOV3 cells)), 14.4 nM (KSP (MV522 cells)), 14.4 nM (KSP (P388 cells))

In Vitro

Cell Viability Assay

Preparation method:

In Vivo

Animal experiment

Applications:

Product Citations

See more customer validations on www.apexbt.com.

References

Caution

FOR RESEARCH PURPOSES ONLY.

NOT FOR HUMAN, VETERINARY DIAGNOSTIC OR THERAPEUTIC USE.

Specific storage and handling information for each product is indicated on the product datasheet. Most APEX BIO products are stable under the recommended conditions. Products are sometimes shipped at a temperature that differs from the recommended storage temperature. Shortterm storage of many products are stable in the short-term at temperatures that differ from that required for long-term storage. We ensure that the product is shipped under conditions that will maintain the quality of the reagents. Upon receipt of the product, follow the storage recommendations on the product data sheet.

APEX BIO Technology

www.apexbt.com

7505 Fannin street, Suite 410, Houston, TX 77054.

Tel: +1-832-696-8203 | Fax: +1-832-641-3177 | Email: info@apexbt.com

