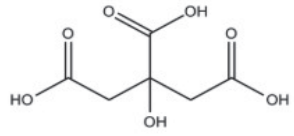
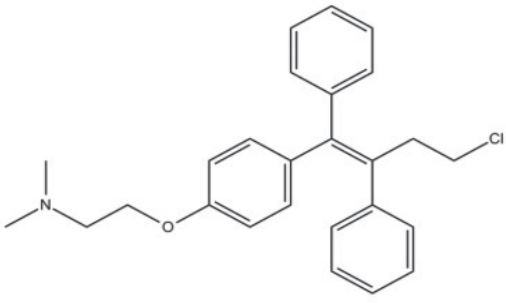
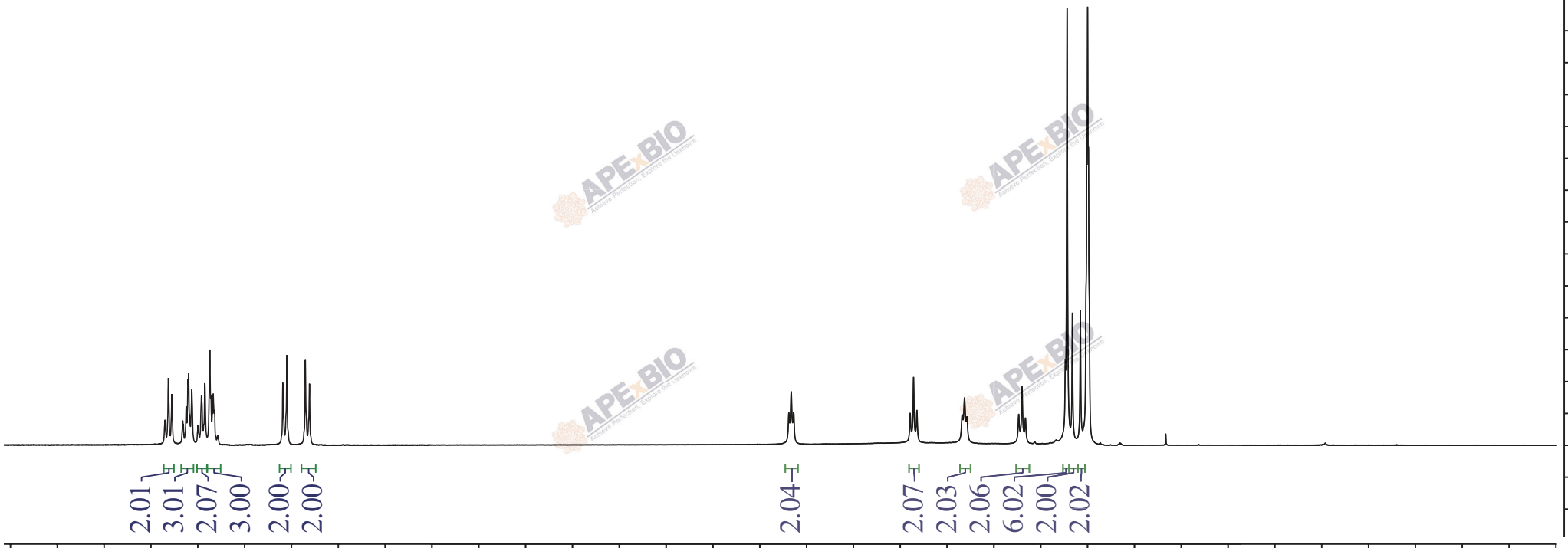


7.41
7.39
7.30
7.30
7.28
7.23
7.21
7.19
7.18
7.17
6.80
6.77
6.68
6.65



4.09
4.08
4.07
3.45
3.43
3.41
3.17
3.16
3.14
2.87
2.85
2.83
2.62
2.61
2.58
2.54
2.50
2.50
2.50



8.0 7.5 7.0 6.5 6.0 5.5 5.0 4.5 4.0 3.5 3.0 2.5 2.0 1.5 1.0 0.5 0.0

fl (ppm)

7500
7000
6500
6000
5500
5000
4500
4000
3500
3000
2500
2000
1500
1000
500
0
-500

APEx-BIO
Análisis Perfiles - Exports de Laboratorio