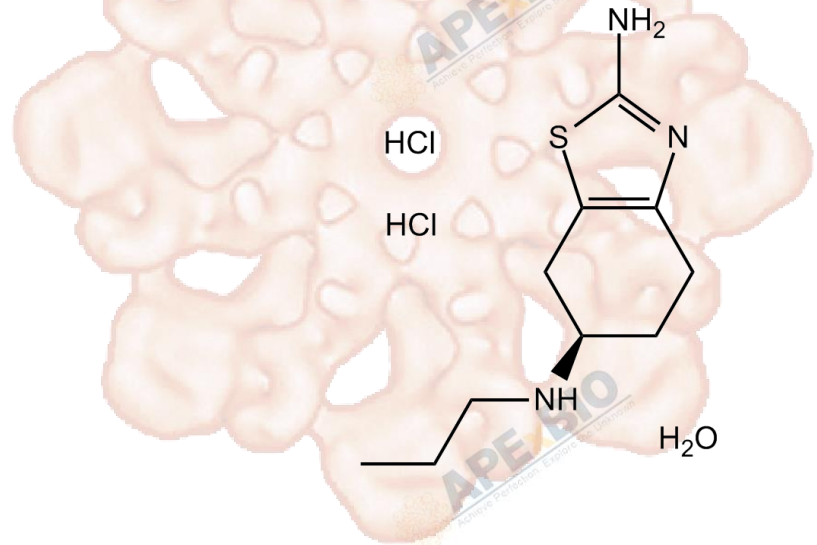


Product Data Sheet

Pramipexole 2HCl Monohydrate

Cat. No.:	B1487
CAS No.:	191217-81-9
Formula:	C ₁₀ H ₁₇ N ₃ S·2HCl·H ₂ O
M.Wt:	302.26
Synonyms:	
Target:	Neuroscience
Pathway:	Dopamine Receptor
Storage:	Store at -20°C



Solvent & Solubility

≥15.11 mg/mL in DMSO; ≥2.37 mg/mL in EtOH with ultrasonic; ≥26.2 mg/mL in H₂O

In Vitro

Preparing Stock Solutions	Solvent Concentration	Mass		
		1mg	5mg	10mg
	1 mM	3.3084 mL	16.5420 mL	33.0841 mL
	5 mM	0.6617 mL	3.3084 mL	6.6168 mL
	10 mM	0.3308 mL	1.6542 mL	3.3084 mL

Please refer to the solubility information to select the appropriate solvent.

Biological Activity

Shortsummary

Novel non-ergoline dopamine receptor agonist

IC₅₀ & Target

In Vitro

Cell Viability Assay

Preparation method:

In Vivo

Animal experiment

Applications:

Product Citations

See more customer validations on www.apexbt.com.

References

Caution

FOR RESEARCH PURPOSES ONLY.

NOT FOR HUMAN, VETERINARY DIAGNOSTIC OR THERAPEUTIC USE.

Specific storage and handling information for each product is indicated on the product datasheet. Most APExBIO products are stable under the recommended conditions. Products are sometimes shipped at a temperature that differs from the recommended storage temperature. Shortterm storage of many products are stable in the short-term at temperatures that differ from that required for long-term storage. We ensure that the product is shipped under conditions that will maintain the quality of the reagents. Upon receipt of the product, follow the storage recommendations on the product data sheet.

APExBIO Technology

www.apexbt.com

7505 Fannin street, Suite 410, Houston, TX 77054.

Tel: +1-832-696-8203 | Fax: +1-832-641-3177 | Email: info@apexbt.com

