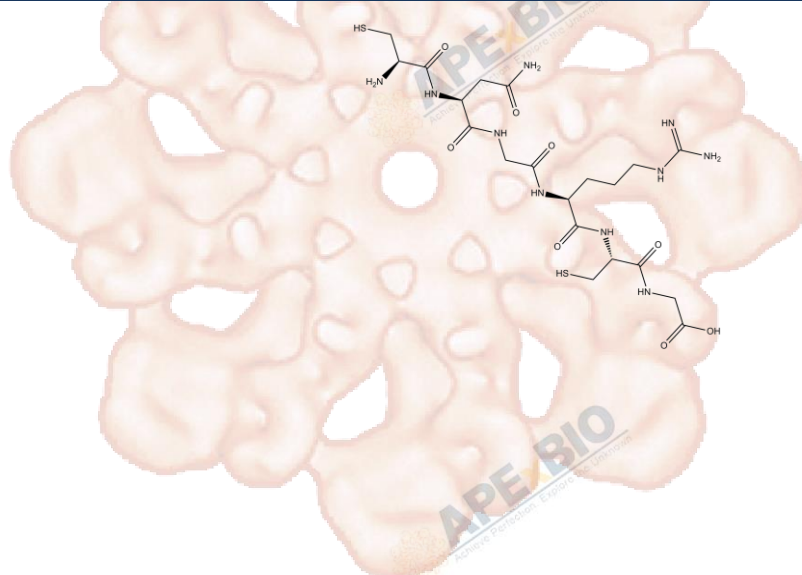


## Product Data Sheet

### NGR peptide

Cat. No.:	B1434
CAS No.:	651328-78-8
Formula:	C <sub>20</sub> H <sub>36</sub> N <sub>10</sub> O <sub>8</sub> S <sub>2</sub>
M.Wt:	608.69
Synonyms:	
Target:	Others
Pathway:	Cell Penetrating Peptide
Storage:	Store at -20°C



### Solvent & Solubility

insoluble in EtOH;  $\geq 20.3$  mg/mL in DMSO;  $\geq 21.15$  mg/mL in H<sub>2</sub>O

In Vitro

	Solvent	Mass Concentration	Mass		
			1mg	5mg	10mg
Preparing Stock Solutions		1 mM	1.6429 mL	8.2144 mL	16.4287 mL
		5 mM	0.3286 mL	1.6429 mL	3.2857 mL
		10 mM	0.1643 mL	0.8214 mL	1.6429 mL

Please refer to the solubility information to select the appropriate solvent.

### Biological Activity

Shortsummary

Cell-penetrating peptide

IC<sub>50</sub> & Target

In Vitro

**Cell Viability Assay**

Preparation method:

In Vivo

**Animal experiment**

Applications:

### Product Citations

See more customer validations on [www.apexbt.com](http://www.apexbt.com).

## References

## Caution

**FOR RESEARCH PURPOSES ONLY.**

**NOT FOR HUMAN, VETERINARY DIAGNOSTIC OR THERAPEUTIC USE.**

Specific storage and handling information for each product is indicated on the product datasheet. Most APExBIO products are stable under the recommended conditions. Products are sometimes shipped at a temperature that differs from the recommended storage temperature. Shortterm storage of many products are stable in the short-term at temperatures that differ from that required for long-term storage. We ensure that the product is shipped under conditions that will maintain the quality of the reagents. Upon receipt of the product, follow the storage recommendations on the product data sheet.

**APExBIO Technology**

**[www.apexbt.com](http://www.apexbt.com)**

7505 Fannin street, Suite 410, Houston, TX 77054.

Tel: +1-832-696-8203 | Fax: +1-832-641-3177 | Email: [info@apexbt.com](mailto:info@apexbt.com)

