

## Certificate of Analysis

Product Name: Sotalol

Cat. No.: B1367

Batch No.: 1

### Physical and Chemical Properties

Batch Molecular Formula: C<sub>12</sub>H<sub>20</sub>N<sub>2</sub>O<sub>3</sub>S

Batch Molecular Weight: 272.36

Purity: >98%

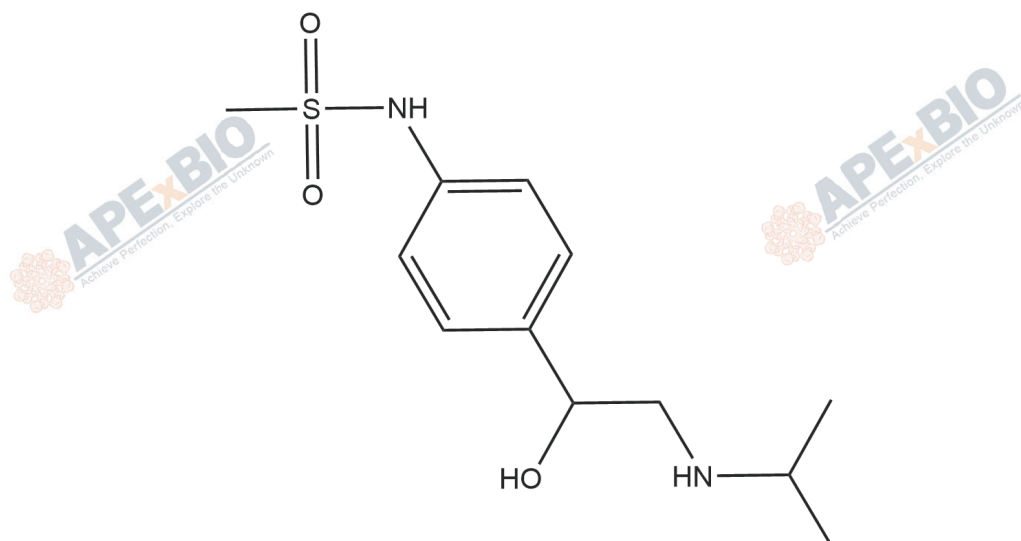
Cas No.: 3930-20-9

### Analytical Data

HPLC: HPLC

Mass Spectrum: Consistent with structure

### Structure



# Caution

**FOR RESEARCH PURPOSES ONLY.**

**NOT FOR HUMAN, VETERINARY DIAGNOSTIC OR THERAPEUTIC USE.**



**APExBIO Technology**



**[www.apexbt.com](http://www.apexbt.com)**

7505 Fannin street, Suite 410, Houston, TX 77054.

Tel: +1-832-696-8203 | Fax: +1-832-641-3177 | Email: [info@apexbt.com](mailto:info@apexbt.com)

