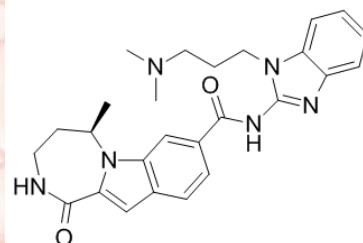


# Product Data Sheet

## BIX 02565

<b>Cat. No.:</b>	B1295
<b>CAS No.:</b>	1311367-27-7
<b>Formula:</b>	C <sub>26</sub> H <sub>30</sub> N <sub>6</sub> O <sub>2</sub>
<b>M.Wt:</b>	458.56
<b>Synonyms:</b>	
<b>Target:</b>	PI3K/Akt/mTOR Signaling
<b>Pathway:</b>	S6 Kinase
<b>Storage:</b>	Store at -20°C



### Solvent & Solubility

≥22.95 mg/mL in DMSO; insoluble in H<sub>2</sub>O; ≥3.17 mg/mL in EtOH with gentle warming and ultrasonic

In Vitro

Preparing Stock Solutions	Solvent	Mass		
		1mg	5mg	10mg
	<b>Concentration</b>			
	<b>1 mM</b>	2.1807 mL	10.9037 mL	21.8074 mL
	<b>5 mM</b>	0.4361 mL	2.1807 mL	4.3615 mL
	<b>10 mM</b>	0.2181 mL	1.0904 mL	2.1807 mL

Please refer to the solubility information to select the appropriate solvent.

### Biological Activity

Shortsummary

RSK2 inhibitor

IC<sub>50</sub> & Target

In Vitro

#### Cell Viability Assay

Preparation method:

In Vivo

#### Animal experiment

Animal models: Rats model

Dosage form: 1, 3, 10, 30, 100, and 300 mg/kg, p.o. once per day for 4 days

Applications: BIX 02565 (1, 3, and 10 mg/kg) elicited decreases in both mean arterial

pressure and heart rate in anesthetized rats. Moreover, BIX 02565 (30, 100, and 300 mg/kg) also induced concentration-dependent decreases in mean arterial pressure (MAP) after each daily oral dose in telemetry-instrumented conscious rats.

Other notes:

Please test the solubility of all compounds indoor, and the actual solubility may slightly differ with the theoretical value. This is caused by an experimental system error and it is normal.

## Product Citations

See more customer validations on [www.apexbt.com](http://www.apexbt.com).

## References

1. Fryer, R. M., Muthukumarana, A., Chen, R. R., Smith, J. D., Mazurek, S. N., Harrington, K. E., Dinallo, R. M., Burke, J., DiCapua, F. M., Guo, X., Kirrane, T. M., Snow, R. J., Zhang, Y., Soleymanzadeh, F., Madwed, J. B., Kashem, M. A., Kugler, S. Z., O'Neill, M. M., Harrison, P. C., Reinhart, G. A. and Boyer, S. J. (2012) Mitigation of off-target adrenergic binding and effects on cardiovascular function in the discovery of novel ribosomal S6 kinase 2 inhibitors. *J Pharmacol Exp Ther.* 340, 492-500

## Caution

**FOR RESEARCH PURPOSES ONLY.**

**NOT FOR HUMAN, VETERINARY DIAGNOSTIC OR THERAPEUTIC USE.**

*Specific storage and handling information for each product is indicated on the product datasheet. Most APEX BIO products are stable under the recommended conditions. Products are sometimes shipped at a temperature that differs from the recommended storage temperature. Shortterm storage of many products are stable in the short-term at temperatures that differ from that required for long-term storage. We ensure that the product is shipped under conditions that will maintain the quality of the reagents. Upon receipt of the product, follow the storage recommendations on the product data sheet.*

**APEX BIO Technology**

**[www.apexbt.com](http://www.apexbt.com)**

7505 Fannin street, Suite 410, Houston, TX 77054.

Tel: +1-832-696-8203 | Fax: +1-832-641-3177 | Email: [info@apexbt.com](mailto:info@apexbt.com)

