

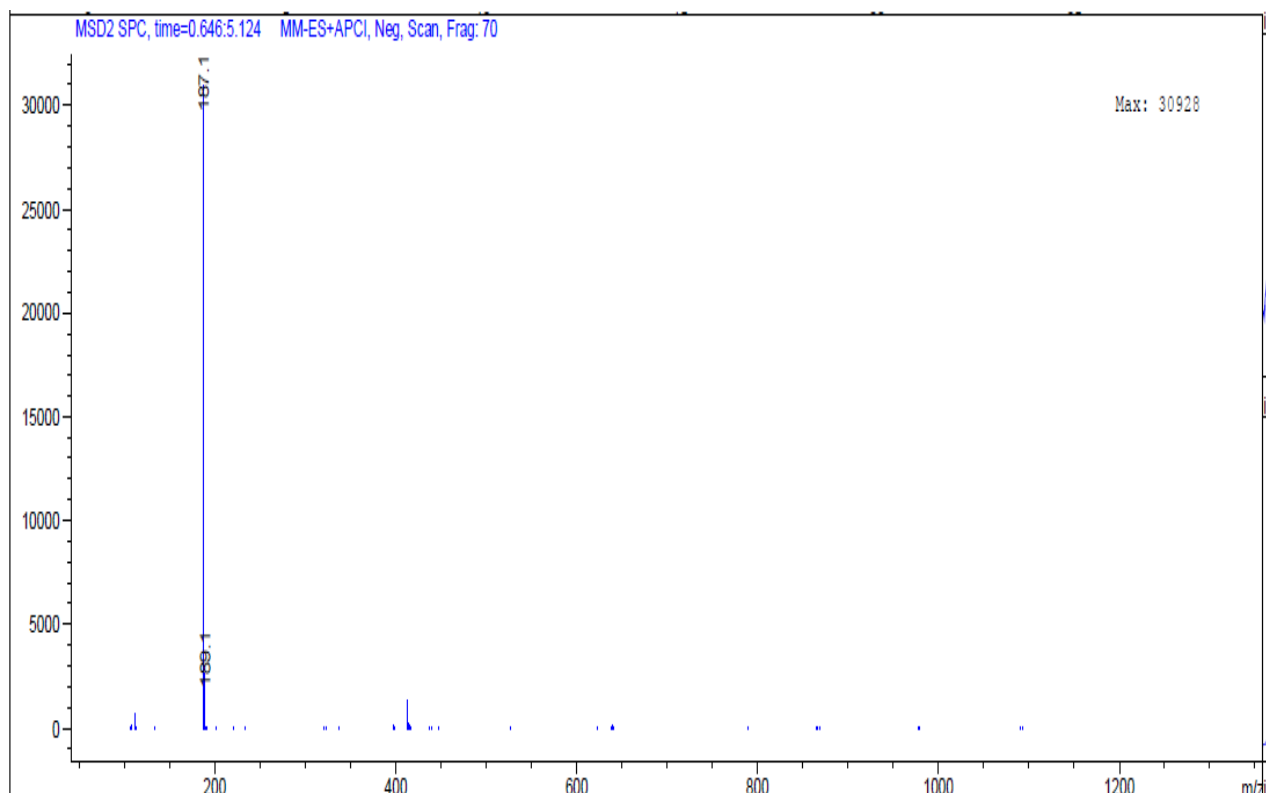
1. Analysis Information

Product Name:	p-Cresyl sulfate
Operator:	David
Injection Date:	9/9/2014 04:44:42 PM
Inj. Volume:	1
Batch No.:	1

2. Acquisition Parameter

Probe:	ESI
Gas Temp:	350°C
Gas Flow:	11L/min
Nebulizer:	50psi
VCap:	4000v
Fragmentor:	120v
Reference:	m/z 121.050873, 922.009798
T.Flow:	0.3ml/min
B.conc:	20%H ₂ O/80%ACN

3. Result



Molecular Weight:	188.20
m/z(M-H) Base Peak :	187.1
m/z(M+H) Base Peak :	189.1