

# High Performance Liquid Chromatography

## 1. Analysis Information

Product Name:	S63845
Operator:	David
Injection Date:	5/27/2017 7:35:41 PM
Batch No.:	4

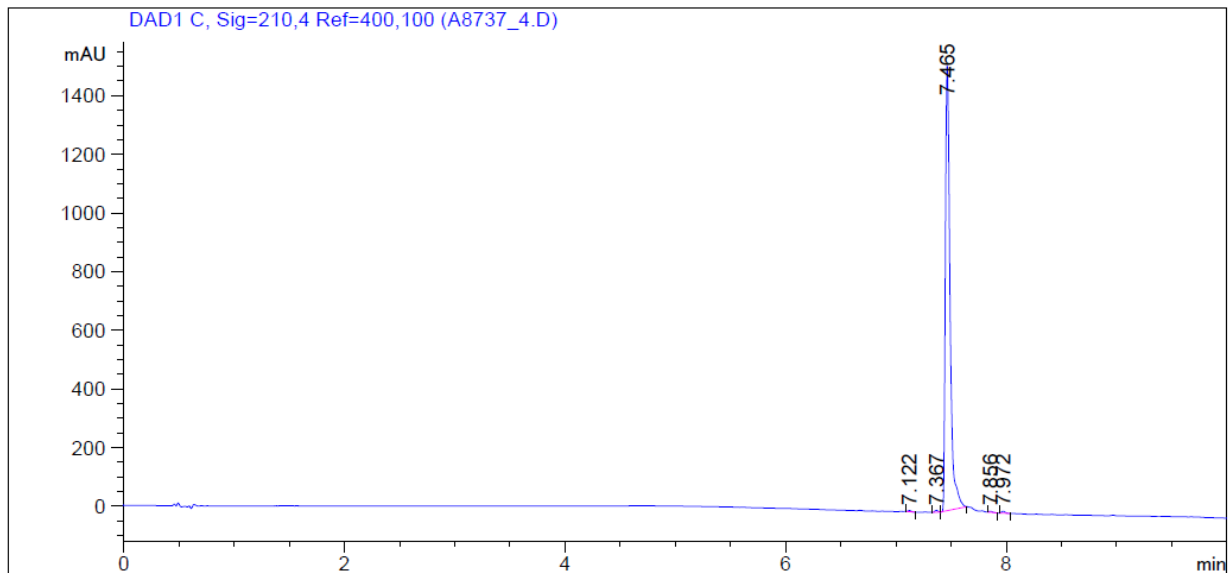
## 2. HPLC Condition

Column:	Athena C18, 3 $\mu$ m, 2.1mm $\times$ 100 mm
Solvent A:	0.1% H <sub>3</sub> PO <sub>4</sub> in 100% Acetonitrile
Solvent B:	0.1% H <sub>3</sub> PO <sub>4</sub> in 100% Water

Gradient:	Time	A	B
	0.0min	0%	100%
	2.0min	0%	100%
	7.0min	95%	5%
	10.0min	95%	5%
	10.0min	Stop	Stop

Flow rate:	0.45ml/min
Wavelength:	210nm
Volume:	10 $\mu$ l

## 3. Result



Rank	RetTime(min)	Area(mAU*s)	Area %
1	7.122	6.97714	0.1541
2	7.367	11.12643	0.2457
3	7.465	4487.07959	99.0950
4	7.856	7.63412	0.1686
5	7.972	15.24211	0.3366