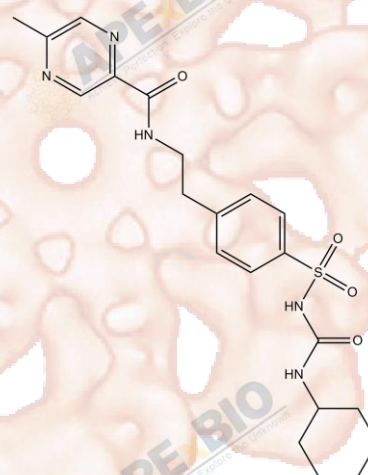


## Product Data Sheet

### Glipizide

Cat. No.:	A8438
CAS No.:	29094-61-9
Formula:	C <sub>21</sub> H <sub>27</sub> N <sub>5</sub> O <sub>4</sub> S
M.Wt:	445.54
Synonyms:	
Target:	Membrane Transporter/Ion Channel
Pathway:	Potassium Channel
Storage:	Store at -20°C



### Solvent & Solubility

insoluble in H<sub>2</sub>O;  $\geq 16.8$  mg/mL in DMSO;  $\geq 2.57$  mg/mL in EtOH with gentle warming

In Vitro

	Solvent	Mass	1mg	5mg	10mg
Preparing Stock Solutions	Concentration				
	1 mM		2.2445 mL	11.2223 mL	22.4447 mL
	5 mM		0.4489 mL	2.2445 mL	4.4889 mL
	10 mM		0.2244 mL	1.1222 mL	2.2445 mL

Please refer to the solubility information to select the appropriate solvent.

### Biological Activity

Shortsummary

Oral anti-diabetic medication

IC<sub>50</sub> & Target

In Vitro

Cell Viability Assay

Preparation method:

In Vivo

Animal experiment

Applications:

## Product Citations

See more customer validations on [www.apexbt.com](http://www.apexbt.com).

## References

## Caution

**FOR RESEARCH PURPOSES ONLY.**

**NOT FOR HUMAN, VETERINARY DIAGNOSTIC OR THERAPEUTIC USE.**

*Specific storage and handling information for each product is indicated on the product datasheet. Most APEx BIO products are stable under the recommended conditions. Products are sometimes shipped at a temperature that differs from the recommended storage temperature. Shortterm storage of many products are stable in the short-term at temperatures that differ from that required for long-term storage. We ensure that the product is shipped under conditions that will maintain the quality of the reagents. Upon receipt of the product, follow the storage recommendations on the product data sheet.*

**APEx BIO Technology**

[www.apexbt.com](http://www.apexbt.com)

7505 Fannin street, Suite 410, Houston, TX 77054.

Tel: +1-832-696-8203 | Fax: +1-832-641-3177 | Email: [info@apexbt.com](mailto:info@apexbt.com)

